



Husqvarna®



HUSQVARNA CONSTRUCTION NORTH AMERICA

2024-2025 SURFACE PREPARATION CATALOG



SOLUTIONS DESIGNED FOR YOUR BUSINESS OPERATIONS

At Husqvarna you can always expect service-minded and knowledgeable staff who provide world-class service, support and business solutions designed around you. This is how we can offer problem-free ownership with maximum uptime. This means you can focus on your business, your clients and your staff. And with a broad supplier and long-term service partner like Husqvarna, you get one point of contact for all your equipment. To put it simply, you get everything at one place.

SERVICES & SUPPORT

USA CUSTOMERS

SERVICE CENTERS

- Atlanta Service Center
- Chicago Service Center
- Dallas Service Center
- Kansas City Service Center
- Corona Service Center
- New Haven Service Center

Service Center phone numbers, address and times of operation can all be found on our website.

CUSTOMER & TECH SUPPORT

- Customer Service - Phone: 800-288-5040
- Technical Service - Phone: 800-288-5040

WEBSITES

- www.husqvarnaconstruction.com
- www.husqvarnacptraining.com

CUSTOMER PORTAL & WEB ORDER

- www.husqvarnaconstruction.com/us/support/customer-portal/

WARRANTY INFORMATION

- www.husqvarnaconstruction.com/us/warranty/

HUSQVARNA CONSTRUCTION FINANCE

- Talk to your Husqvarna representative

CANADA CUSTOMERS

SERVICE CENTERS

- Calgary Service Center
- Montreal Service Center
- Toronto Service Center
- Vancouver Service Center

Service Center phone numbers, address and times of operation can all be found on our website.

CUSTOMER & TECH SUPPORT

- Customer Service - Phone: 800-461-9589
- Technical Service - Phone: 800-288-5040

WEBSITES

- www.husqvarnaconstruction.com/ca-en/
- www.husqvarnaconstruction.com/ca-fr/
- www.husqvarnacptraining.com

CUSTOMER PORTAL & WEB ORDER

- www.husqvarnaconstruction.com/ca-en/support/customer-portal/
- www.husqvarnaconstruction.com/ca-fr/assistance/portail-clients/

WARRANTY INFORMATION

- www.husqvarnaconstruction.com/ca-en/warranty/
- www.husqvarnaconstruction.com/ca-fr/garantie/

HUSQVARNA CONSTRUCTION FINANCE

- Talk to your Husqvarna representative

NEW DIAMOND TOOL NAMING SYSTEM

Across the entire range, you'll find the same logical naming structure, color-coded grit sizes, and marking information – all to make your workday easier. Simply follow the system steps below to learn how to read the new structure.

1 2 3 4 5
TACTI-POLISH T T W

1ST

PERFORMANCE LEVEL + APPLICATION

1
ELITE / VARI / TACTI

+

2
GRIND / POLISH / SHAVE

2ND

NAME WITH TWO LETTERS

4
T = TRANSITION

P = POLISH

B = BURNISHING

M = MAINTENANCE

3
E = ELITE

V = VARI

T = TACTI

+

O = OVERLAY

C = CORNER

S = SANDPAPER

F = FENIX OR FLEX

X = XPRESS

2ND LETTER INDICATES APPLICATION

3RD

TYPE OF ACTION

5
W = WET / D = DRY

EASY TO CHOOSE. EASY TO USE.

Get in the flow – and stay there. Our range features several improvements that make it easy to choose and use the right tool.



CLEARER BRANDING

A larger logo makes it easier than ever to identify Husqvarna products.

THREE PERFORMANCE LEVELS

Expect the right performance for each job. Choose from 3 clearly marked performance levels to find the perfect tool for your needs:

ELITE series

VARI series

TACTI series

SIMPLER PRODUCT NAMES

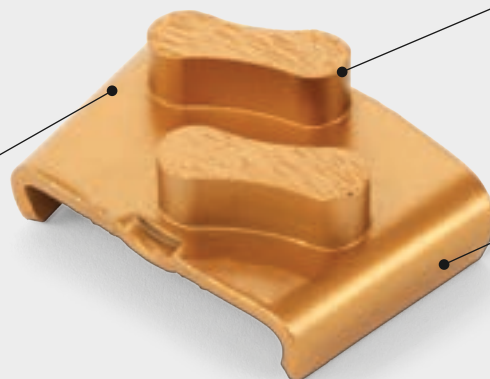
One straightforward naming system has been applied across the entire range, clearly indicating each tool's performance level, application, and action.

PLASTIC-FREE PACKAGING

All diamond tools are now packaged in cardboard. This ensures that all tools are protected, while reducing the use of plastic and waste at the construction site.

CONSISTENT COLOR CODING

The grit sizes for all metal and resin tools are now indicated by a single color-coding system.



CONSISTENT TOOL MARKINGS

Consistent marking information on the tools gives you all the information you need at a glance.

QUALITY ASSURED AT EVERY STEP

All our diamonds are custom made to meet the specific needs of each application. They are then tested and graded at our own sophisticated R&D laboratories. Every step, from purchasing to production to analysis, is overseen and quality assured by our own in-house team of diamond experts.

EZCHANGE™ ATTACHMENT SYSTEM

Minimise interruptions: All metal tools (and ELITE resin tools) now feature the patented EZchange™ attachment system.



CONTENT

HUSQVARNA FLOOR APPLICATIONS

Removal	10-11
Prepare	12-13
Refine	14-19
Steel Applications	20-21
Dust & Slurry Management	22-23

HUSQVARNA PRODUCT RANGE

Floor Scrapers	24-27
Shot Blasters	28-33
Steel Blasters	34-37
Floor Scarifiers	38-41
Floor Shavers	42-45
Single Disc Grinders	46-49
Planetary Grinders	50-61
Dust & Slurry Management	62-75

HUSQVARNA CONSUMABLES

Chemicals	76-79
Diamond Tooling	80-91
Hipertrowel	92-95

THINK BIGGER WORK BETTER

Open your eyes to the possibilities with the most comprehensive range of solutions for surface preparation in the industry. By combining our extensive know-how with a wider range of machines, we can meet all your surface preparation needs - from shot and steel blasting, to scraping, scarifying, grinding and much more.

We are also streamlining our diamond tools into one new range to offer an unparalleled surface preparation experience. Finding the right tooling for your application will become an even smoother and effortless process.

Benefit from our industry leading expertise and push the boundaries of what you can achieve.

EVEN MORE BENEFITS

Being the complete partner is about more than hardware. Your goal is leaving behind outstanding results and ours is to exceed your expectations - not only with machines and tools, but with efficient services and friendly guidance. Whatever the ambition or job, your success is our biggest reward.

- **WIDEST OFFERING**
- **BROADEST SELECTION**
- **TACKLE NEW APPLICATIONS**
- **HANDLE MORE MATERIALS**
- **WORLD CLASS SUPPORT**

For more information visit our website:
www.husqvarnaconstruction.com







GAME-CHANGING SOLUTIONS FOR SURFACE PREPARATION!

Take your business in exciting new directions with our world-class solutions. We are moving the industry forward by making new additions to our offering and streamlining our range of diamond tools. Now you can transform even more surfaces and find more of what you need in one place.





REFINE





WHICH TYPE OF FLOOR DO YOU WANT TO REMOVE?

**GLUED
SOFT COVERINGS**





SCRAPING

**GLUED
HARD COVERINGS**



RIDE-ON SCRAPING

**THIN COATINGS FROM
HARD FLOORS**



SHOT BLASTING

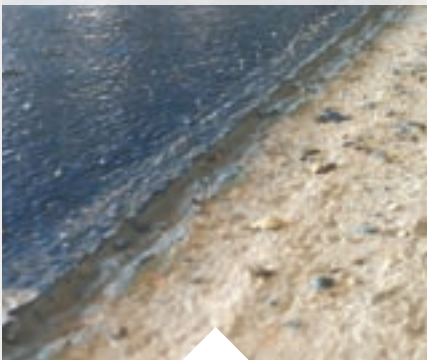


METHODS TO REMOVE COATINGS

There is more than one method to remove a coating from a floor. Choosing wisely between multiple methods to remove floors will enable you to achieve better results, reduce tooling cost, optimize labor time and create better conditions for floor maintenance.

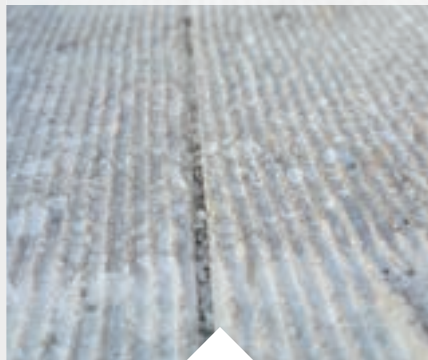
Industries have different requirements from floor materials. Therefore, before removing a floor, you have to determine which surface preparation methods are the most suitable in terms of budget, efficiency, quality and of course the finished result. Industrial floors are subject to movements of loads, chemical products and damage throughout their lifetime. When removing old and damaged industrial floor coatings, the objective is to remove the floor coatings without damaging the concrete base layer beneath them.

THICK & RESILIENT COATINGS FROM HARD FLOORS



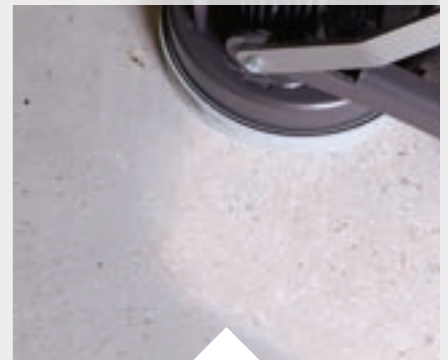
SCARIFYING

THICK & RESILIENT COATINGS FROM SOFT FLOORS



SHAVING

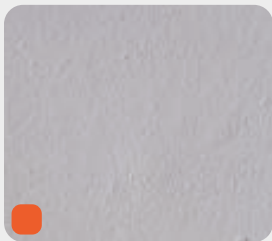
THIN COATINGS FROM SOFT FLOORS



GRINDING

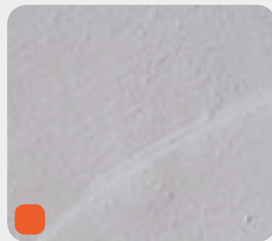


WHAT CSP LEVEL ARE YOU LOOKING FOR?



CSP-1
LIGHT GRINDING

To achieve CSP-1, use a Husqvarna grinder with metal bonded diamond tools.



CSP-2
MEDIUM GRINDING

To achieve CSP-2, use a Husqvarna grinder with metal bonded diamond tools.



CSP-3
VERY LIGHT SHOT BLASTING
OR VERY ROUGH GRINDING

To achieve CSP-3, preferably use a shot blaster with small sized steel shot at maximum speed.



CSP-4
LIGHT SHOT BLASTING

To achieve CSP-4, use a shot blaster with small / medium sized steel shot at high speed.



CSP-5
MEDIUM SHOT BLASTING

To achieve CSP-5, use a shot blaster with medium sized steel shot at medium speed.



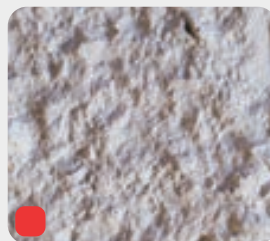
CSP-6
MEDIUM/HEAVY SHOT BLASTING
OR LIGHT SCARIFYING

To achieve CSP-6, use a shot blaster with medium / large sized steel shot at medium speed or a Husqvarna scarifier at low depth.



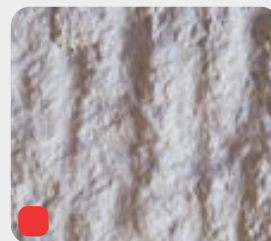
CSP-7
HEAVY SHOT BLASTING OR
MEDIUM SCARIFYING

To achieve CSP-7, use a shot blaster with large sized steel shot at low speed or a Husqvarna scarifier at medium depth.



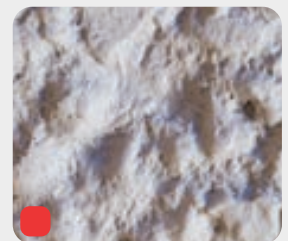
CSP-8
MEDIUM / HEAVY SCARIFYING
OR LIGHT MILLING / PLANING

To achieve CSP-8, use a Husqvarna scarifier at high depth.



CSP-9
HEAVY SCARIFYING OR
MEDIUM MILLING / PLANING

To achieve CSP-9, use a large Husqvarna scarifier at very high depth.



CSP-10
HEAVY MILLING / PLANING

To achieve CSP-10, use a large Husqvarna scarifier at very high depth.



METHODS TO PREPARE FLOORS

Proper surface preparation of existing concrete is essential for achieving a successful project including resurfacers, polymermodified or self-leveling overlays, sealers, coatings, or stains.

Since there are many products available for overlays and restoration, it is important you know the surface condition requirements for the specific product you plan to use. Taking steps to correctly prepare the existing concrete surface will save you time and money, and can substantially reduce the possibility of coating failure. The International Concrete Repair Institute (ICRI) has defined ten classifications for proper surface preparation and has developed profile replica blocks to give a visual point of reference for the user. Each profile carries a CSP number ranging from a base line of 1 (nearly flat) through 10 (very rough).

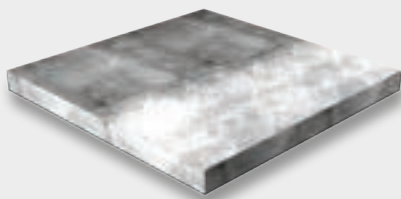


Prep Method	CSP-1	CSP-2	CSP-3	CSP-4	CSP-5	CSP-6	CSP-7	CSP-8	CSP-9	CSP-10
Description										
Grinding	[Orange bar]									
Shot Blasting			[Dark blue bar]							
Scarifying						[Yellow bar]				
Milling/Planing							[Red bar]			

Grinding

To level uneven floors and remove thin coatings.

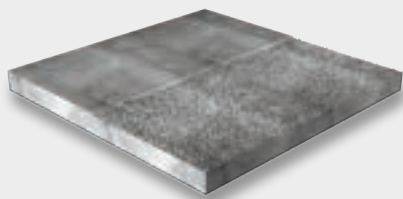
Thousands of customers around the world use our floor grinders. They have a solid reputation for quality of work produced on industrial, and decorative flooring, but also in decontamination and demolition markets. Available in many sizes and electrically-powered versions can work any time and anywhere.



Shot Blasting

To clean and retexture concrete or asphalt.

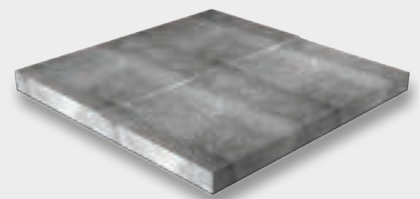
After the steel abrasive hits the surface, the shot blaster recycles the media. Dust and contaminants are removed by an air wash separator and are removed to a dedicated Husqvarna dust collector. This makes the process almost dust free in operation.



Scarifying

To level large surfaces or remove thick coatings.

The drum is placed inside the machine and once the machine is switched on, the rotating drum generates centripetal force which 'slams' the cutter on to the surface, causing a mechanical cutting action. Dust and contaminants are removed to a dedicated Husqvarna dust collector.





REFINE FLOOR OVERVIEW



REFINE CONCRETE FLOORS

Decorative floors are a new, fast developing market trend. Concrete floors are no longer considered as sole supports, they have become part of the decoration itself while offering superbly functional features.

- Polishing
- Bush hammering
- Exposing aggregates
- Grooving



REFINE ASPHALT FLOORS

Removing the binder of asphalt surfaces in order to show the natural beauty of the colored aggregate particles is often considered the best solution to enhance aesthetic on asphalt because it saves maintenance costs. Asphalt can also be polished for a smooth surface with exposed aggregates.

- Polishing
- Exposing aggregates



REFINE WOODEN FLOORS

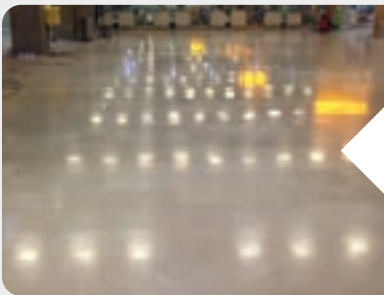
Renovate wooden floors in residential settings or school gymnasiums, or outdoor patios, with our special tools developed for wood grinding.

- Grinding



METHODS TO REFINE FLOORS

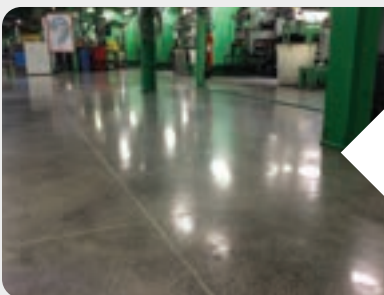
Floors are getting more and more focus from architects and facility owners when it comes to functional and aesthetic specifications. Mechanically refining materials that are already part of a construction structure, such as concrete, is often a sustainable smart choice.



REFINE NATURAL STONE FLOORS

Just as the name suggests, natural stone is stone created by nature. Natural stone is taken from the Earth's crust and shaped to the desired size and form through sawing, grinding or polishing. Its global occurrence, as well as its beautiful and varied appearance, has made it a very popular stone for construction and decoration.

- Polishing
- Grinding
- Bush hammering



RENOVATION AND MAINTENANCE OF REFINED FLOORS

The trend is not to replace existing surfaces but to maintain and renovate them. Industrial flooring renovation offers a cheaper, less invasive solution that is a more environmentally conscious alternative to a new industrial floor. With Husqvarna equipment, you are able to repair cracks or seals and you can maintain your polished concrete by cleaning it and restoring its original properties.

- Polishing
- Exposing aggregates

REFINE CONCRETE FLOORS



GRINDING WITH POLISHING TOOLS

POLISHED CONCRETE



The Husqvarna method to polish concrete is called Superfloor™. It consists of a set of pre-defined and well-proven processes including a complete concept of machines, tools and chemicals for creating a mechanically refined, polished and diffusion open concrete surface with resulting surface metrics (Ra, DOI and GU). Superfloor polished concrete floors are very durable, have a low life cycle cost, high slip resistance and are aesthetically pleasing, making them a popular choice for industrial and commercial facilities.



GRINDING WITH BUSH HAMMERED

BUSH HAMMERED CONCRETE



Bush-hammering concrete is a process that enables you to achieve a similar effect as natural cut stone, with a concrete surface as the basis. The concrete is mechanically abraded with bush-hammering tools in order to give an authentic effect to outdoor areas. The bush-hammered concrete is ideal for swimming pool surroundings, or for the creation of an anti-skid surface on terraces, garden paths, or pedestrian areas.



SHAVING WITH A SPECIAL DRUM

GROOVED CONCRETE



Grooving concrete is the process of creating patterned grooves along concrete surfaces. It can be used to make a surface anti-slip, for example in a farm to reduce the risk of cattle slipping. It can also be used to create an easy-to-differentiate "guide-line" allowing people with impaired vision to follow with their cane in cities. The shaving method can be used on surfaces such as concrete to create grooves in the floor. By using different sawing blades and drum settings, it is possible to create a wide range of grooved patterns.

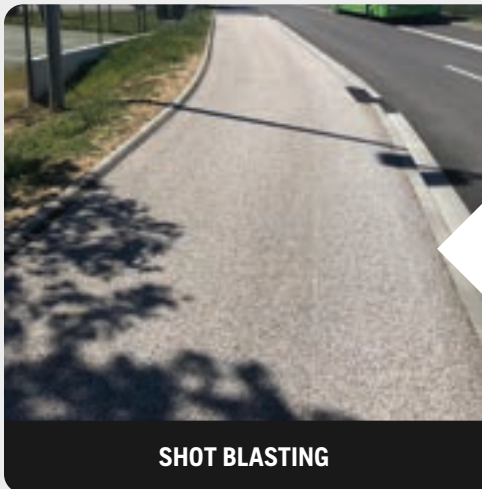
REFINE ASPHALT & WOODEN FLOORS



POLISHED ASPHALT



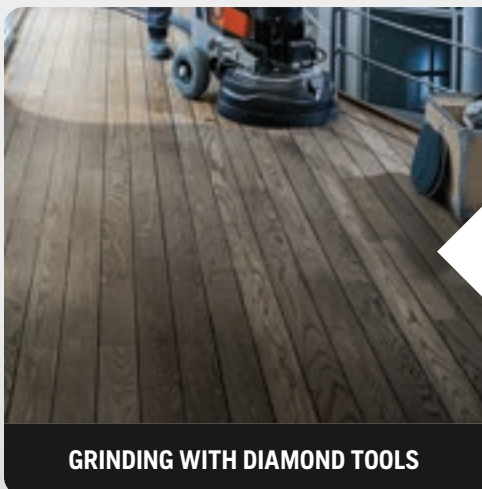
Polished asphalt exposes the aggregates in the asphalt coarse. This is done to promote the various colors existing between the bond and the aggregates. The final result has the look of polished concrete or marble. It has a very smooth surface with a high quality feel, which maintains the original properties of the asphalt. Polished asphalt can adapt to many places with high traffic, such as exhibition halls, schools, museums, offices, entrances, pedestrian walk ways, etc.



ASPHALT WITH EXPOSED AGGREGATES



Natural exposed aggregate asphalt gives the architect or designer the option to use locally available aggregates to compliment, contrast and enhance roads, car parking areas, footpaths, residential developments, town centers and urban areas. Exposed aggregate asphalt provides a unique, new generation of distinctive asphalt surfaces with greatly increased aesthetic appeal and improved skid resistance while still providing all the functional qualities and durability of traditional asphalt.



WOOD GRINDING



With our specifically developed wood grinding tools mounted under our grinders, you can easily renovate any old wooden floor or patio. Unlike many other belt-driven machines, this is a very forgiving method that is equally efficient in residential settings as it is in large school gymnasiums. The possibilities ranges from removing laquer to grinding a very smooth surface.

REFINE NATURAL STONE FLOORS

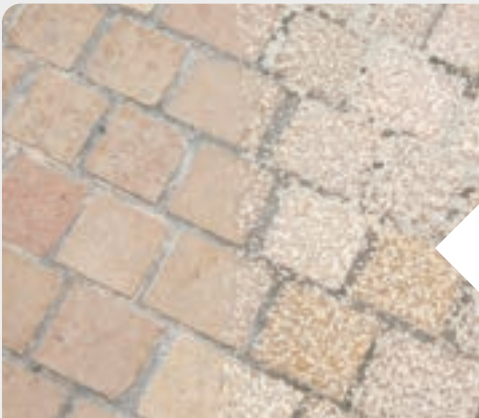


WET OR DRY GRINDING

POLISHED MARBLE, LIMESTONE, GRANITE AND CEMENT-BASED TERRAZZO



When speaking about natural stone for floors, we mainly think about granite, limestone and marble. We developed special grinding methods for the various types of floors. We have also included cement-based terrazzo, while not actually natural stone, it contains marble and is smoothed using a grinding method that is much the same as natural stone.



GRINDING WITH BUSH HAMMERED

BUSH HAMMERED COBBLESTONES / BRICKS



Many cities are facing problems due to slippery surfaces on squares, sidewalks, or pavements made of cobblestones or bricks. Cobblestones and bricks get gradually polished because of pedestrian and/or car traffic. Bush-hammering existing cobblestone is the ideal solution in cities to create a slip-resistant surface.



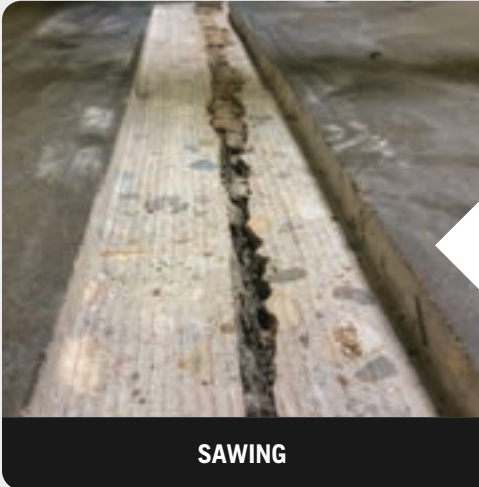
GRINDING WITH DIAMOND DISCS

GRIND COBBLESTONES



The presence of irregular cobblestones in city centers is often a problem for people with reduced mobility, using wheeled support devices to remove unevenness while preserving the charming look of cobblestone surfaces.

RENOVATION & MAINTENANCE OF REFINED FLOORS



REPAIR OF EXPANSION JOINTS



The sawing technology can be used on surfaces such as concrete to create a trench in the floor. By using a certain number of sawing blades and drum settings, it is possible to create a trench up to 11.8 in (30 cm) in width.



MAINTENANCE OF POLISHED CONCRETE



Polished concrete is an attractive flooring solution, especially in industrial and commercial settings. To maintain the particular attributes of polished concrete (e.g. gloss, slip resistance), we recommend cleaning with diamond impregnated Hiperclean pads and periodical maintenance with a floor grinder or burnisher.



STEEL APPLICATIONS

Steel blasting systems are very effective for removing paint, coatings, corrosion, non-skid and other contaminants from steel surfaces. Steel blasting systems use steel shot or a mixture of angular steel grit and steel shot, allowing the operator to achieve a wide range of anchor profiles and roughness needed for almost any type of coating application.

HORIZONTAL SYSTEMS



STORAGE TANK BOTTOM PLATES AND ROOF PLATES



SHIP AND HELICOPTER DECKS



WALKWAYS & HELICOPTER DECKS ON OFFSHORE PLATFORMS



STEEL BRIDGES AND STEEL DECKS

VERTICAL SYSTEMS



STORAGE TANK



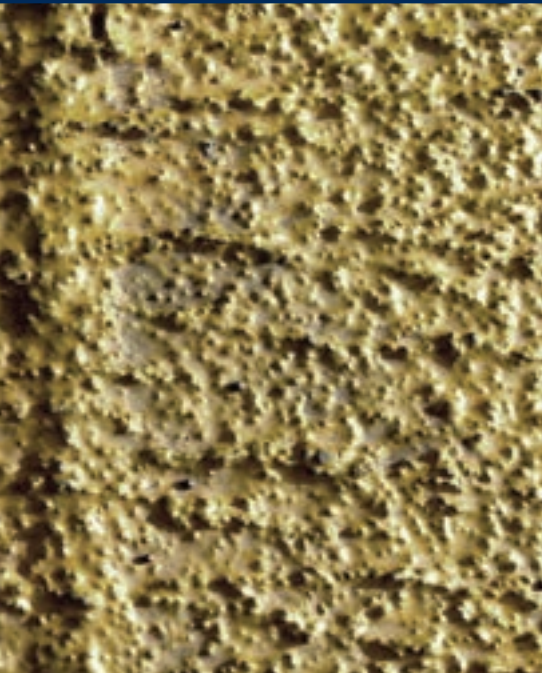
SHIP HOLDS



SHIP HULLS



PIPES



STEEL SURFACE PREPARATION

The performance of protective coatings or paint and related products applied to steel is significantly affected by the state of the steel surface immediately prior to painting. The principal factors that are known to influence this performance are: the presence of rust and mill scale; the presence of surface contaminants including salts, dust, oils and greases; the surface profile. The surface preparation process not only cleans steel, but also creates a suitable profile (anchor pattern) to receive the protective coating. Closed circuit steel blasting machines are very cost effective and efficient in preparing steel surfaces. They clean and prepare at the same time, ensuring a proper adhesion of the subsequent coating, painting or any other product to be applied. When preparing steel surfaces, we focus on two things: the cleanliness and the roughness levels.

SURFACE CLEANLINESS

There are two main international standards regarding steel surface cleanliness: the ISO Standard and the SSPC Standard.

ISO 8501-1 standards

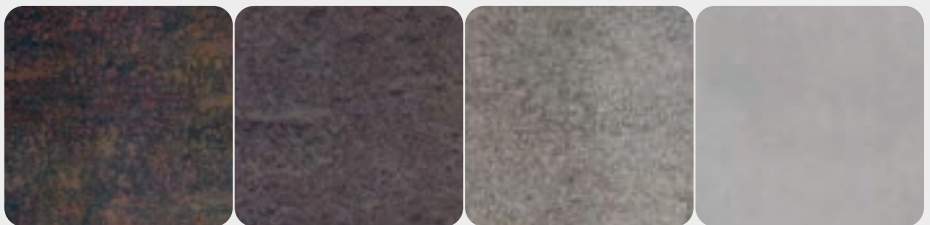
It is a visual assessment relating to surface cleanliness. A number of preparation grades and the degree of cleaning are specified. The preparation grades are defined by written descriptions of the surface appearance after the cleaning operation, together with representative photographic examples.

SSPC standards

The SSPC (Society for Protective Coatings) Standards are used for specifying the degree of cleanliness of steel surfaces. SSPC has standard definitions and photographs for common methods of cleaning.

SURFACE ROUGHNESS

The surface roughness of the steel surface is important to ensure a good adhesion of the coatings (set by an ISO standard). It is measured in microns and it shows the difference between the peaks and troughs in a steel surface. This is important because it will also affect the amount of paint to be used. With closed circuit steel blasting machines, it is possible to easily achieve any roughness profiles by adjusting the abrasive mixture and speed of the machine.



Specification	BRUSH-OFF	COMMERCIAL	NEAR WHITE METAL	WHITE METAL
Description				
ISO 8501-1	SA 1	SA 2	SA 2.5	SA 3
SSPC	SP 7	Sp 6	SP 10	SP 5



OUR HEPA DUST EXTRACTORS

On any construction job, dust is the enemy. It can harm machine operators. It can cause problems with equipment. And it can have a negative effect on working efficiency. No matter your project, make them part of your set-up and enjoy more confidence, higher productivity and a healthier working environment.

Most of our models of dust extractors comply with the latest HEPA standards for heavy-duty dust extractors usage (DE Line / T 4000 / T 7500). They are also equipped with EN1822 certified HEPA H13-filters.

In addition, our trained service technicians will help keep your dust and slurry equipment in top working condition. Our technicians follow correct service procedures and always use individually tested Husqvarna original HEPA filters for replacement. It is important to maintain your equipment to ensure performance, safety and efficiency throughout your equipment's life.



THE IDEAL COMPLEMENT TO YOUR AIR QUALITY SYSTEM

The Husqvarna A-Line includes some of the most advanced and versatile portable air cleaners available on the market. They are tested and certified for use as both Air Cleaners and Negative Air Machines, making them the ideal complement to your dust and slurry management equipment, as well as in other applications where good air quality is essential. The Husqvarna A-Line provides added workplace safety, and aids in legal compliance. The compact design makes the units easy to move and transport.

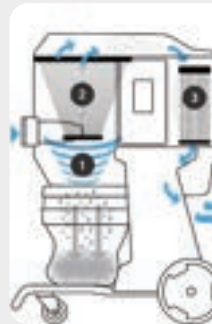
EVERY BREATH COUNTS

No matter which type of surface you are working on, dust and slurry need to be removed in a safe and efficient way to protect you and your team from dust exposure. With Husqvarna, you get access to guidance, knowledge and a broad, fully integrated range of highly efficient equipment for dust and slurry management, enabling you to comply with rules and regulations without compromising your productivity.



HEPA H13 FILTER

The strict HEPA standard (EN 1822-1) is divided into different levels (E10 to H14) depending on filtration efficiency. Husqvarna applies level H13, which can separate up to 99.95% of the particles between 0.15 and 0.30 μm in size. This particle size is the hardest to separate – both larger and smaller particles are easier to capture in a filter.



THREE STAGE FILTERING

Stage 1: Cyclone chamber removing the heaviest dust fractions. Stage 2: Large, washable sock-style main filter provides long, uninterrupted service. Can be cleaned efficiently from outside the tank with the Jet Pulse filter cleaning system. Stage 3: Individually tested and certified HEPA H13 micro filters catching 99.99% of the remaining silica dust in the repairable fraction (0.3 μm).



JET PULSE FILTER CLEANING

Ensures high continuous airflow due to easy and efficient cleaning of the conical main filter without opening the machine, meaning you are not exposed to particles.



PRE-SEPARATION

Minimizes the dust particles that make it to the vacuum filter. This prolongs filter life and maintains higher airflow resulting in greater dust pick up and a cleaner working environment.



LONGOPAC®

The Longopac bag system ensures a clean and simple change of the bag without any dust spills. Meaning harmful particles are not released into the working environment.



AIR CLEANERS

The ideal complement on every jobsite to quickly and efficiently clean the air from airborne dust.



REMOVAL OF FLOOR COVERINGS & ADHESIVES

FLOOR SCRAPER OVERVIEW

Husqvarna offers a complete range of floor scraping machines and tools for the removal of bonded and soft floor coverings. From the small but powerful walk behind floor scraper to the heavy duty ride-on unit, there is a Husqvarna floor scraper to match every requirement.

FLOOR SCRAPER APPLICATIONS



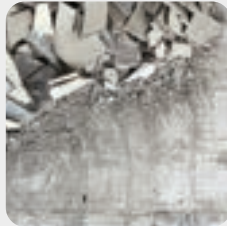
LINOLEUM



CARPET



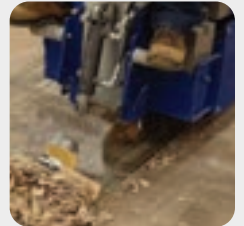
VINYL TILES



CERAMICS



RESINS



EPOXY

FLOOR SCRAPER RANGE

FLOOR SCRAPERS
BS 75



Output power
2 hp (1.5 kW)
Working width
2 - 12 in (50 - 305 mm)

FLOOR SCRAPERS
BS 110



Output power
2 hp (1.5 kW)
Working width
2 - 12 in (50 - 305 mm)

FLOOR SCRAPERS
BMS 220ADB



Output power
12 x 8 V
Working width
2 - 27 in (50 - 685 mm)

FLOOR SCRAPERS
BMS 280P



Output power
25 hp (18.6 kW)
Working width
2 - 27 in (50 - 685 mm)



REMOVE BONDED AND SOFT FLOOR COVERS

Husqvarna floor scrapers are equipped with different types of scraping blades to remove (old or worn out) floor coverings such as hardwood parquet, ceramics, linoleum, vinyl, carpet, woven floor, glue and roofing materials.

The stronger the adhesive, the smaller the blade you have to use. Use thicker blades to increase the lifetime or to remove hard materials.



WALK-BEHIND OR RIDE-ON UNITS

From the small but powerful walk behind stripper to the heavy duty ride-on unit, there is a Husqvarna floor scraper to match every requirement.



STRONG & COMPACT DESIGN

Husqvarna floor scrapers are heavy duty and strongly fabricated to create minimum downtime. They can easily pass through a standard doorway.



BATTERY DRIVEN

Husqvarna BMS 220ADB has up to 10 hours of run time thanks to its 12 powerful batteries. It provides complete freedom of movement.

TECH DATA TABLE

Full product details and technical specifications



Product Web Page



Product Specification	BS 75 970615002	BS 110 970615101	BMS 220ADB 970615404	BMS 280P 970615301
Engine				
Output power	2 hp (1.5 kW)	2 hp (1.5 kW)	12 x 8 V	25 hp (18.6 kW)
Power source	Corded	Corded	Battery	Propane
Motor				
Phases	1 ph	1 ph	-	-
Voltage	110 V	110 V	-	-
Rated current	16 A	16 A	-	-
Frequency	-	-	-	-
Scraping				
Working width	2-12 in (50-305 mm)	2-12 in (50-305 mm)	2-27 in (50-685 mm)	2-27 in (50-685 mm)
Working speed	69 ft/min (21 m/min)	69 ft/min (21 m/min)	160 ft/min (49 m/min)	440 ft/min (134 m/min)
Other				
Type of operation	Self-propelled	Self-propelled	Ride-on	Ride-on
Dimensions				
Hose diameter	2 in (51 mm)	2 in (51 mm)	-	-
Length	34 in (864 mm)	38 in (965 mm)	59 in (1,499 mm)	64 in (1,625 mm)
Width	20 in (508 mm)	20 in (508 mm)	24 in (609 mm)	30 in (762 mm)
Height	42 in (1,067 mm)	42 in (1,067 mm)	52 in (1,320 mm)	63 in (1,600 mm)
Weight	282 lbs (128 kg)	375 lbs (170 kg)	2,518 lbs (1,142 kg)	2,900 lbs (1,315 kg)
Sound & Noise				
Sound level	70 dB(A)	75 dB(A)	77 dB(A)	77 dB(A)
Vibrations				
Vibration handlebar	4 m/s ²	4 m/s ²	0.5 m/s ²	0.5 m/s ²
Recommended Dust Extractor				
Dust extractor	DE 120 H	DE 120 H	-	-

FLOOR SCRAPER ACCESSORIES & SPARE PARTS

Recommended accessories/spare parts that fit these models

Product Specification		BS 75	BS 110	BMS 220ADB	BMS 280P
Blade Holders					
Tool holder	535371601			X	X
6" (152 mm)	534329001			X	X
10" (254 mm)	534329101			X	X
12" (305 mm)	533110302			X	X
27" (686 mm)	536986701			X	X
Chisels					
2" (51 mm)	533858501			X	X
6" (152 mm)	533865601			X	X
Heavy Duty Flat Blades					
6" x .09" (152 x 2.3 mm)	533824501	X	X	X	X
8" x .09" (203 x 2.3 mm)	533851501	X	X	X	X
12" x .09" (305 x 2.3 mm)	533850301	X	X	X	X
12" x .18" (305 x 4.6 mm)	533865901	X	X	X	X
24" x .09" (609 x 2.3 mm)	533833701			X	X
Other					
Transport dolly	534595902			X	X
Self Scoring Blades					
8" x .09" (203 x 2.3 mm)	533857301	X	X	X	X
10" x .09" (254 x 2.3 mm)	533860201	X	X	X	X
12" x .09" (305 x 2.3 mm)	533859601	X	X	X	X
Weight Kits					
20 lbs (9 kg) kit	533114801	X			
40 lbs (18 kg) kit	535268201				X

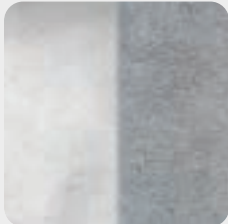


IDEAL FOR CONCRETE SURFACE PREPARATION

SHOT BLASTING OVERVIEW

All our shot blasting machines are characterized by their maneuverability, precision and versatility. With all our shot blasters you are able to work in a close to dust-free environment when they are connected to an appropriate dust extractor.

SHOT BLASTER APPLICATION AREAS



CLEAN & PREPARE



REMOVE TOP LAYERS



REMOVAL OF MARKINGS



SKID RESISTANCE



ASTHETIC AFFECTS

SHOT BLASTER RANGE SPOTLIGHT*

SHOT BLASTERS 1-8DM



Output power
2 hp (1.5 kW)
Working width
8 in (203 mm)

SHOT BLASTERS 1-10DPS75



Output power
10.6 hp (8 kW)
Working width
10 in (254 mm)

SHOT BLASTERS 1-15DS



Output power
21 hp (15.6 kW)
Working width
15 in (381 mm)

SHOT BLASTERS 2-20DT



Output power
28.3 hp (21.1 kW)
Working width
22 in (559 mm)

SHOT BLASTERS BMR 25P



Output power
25 hp (18.6 kW)
Working width
10 in (254 mm)

*Flip to next pages to view the full range.



CLEAN & RE-TEXTURE CONCRETE OR ASPHALT

Closed circuit media blasting machines throw a large amount of steel abrasive media by centrifugal force at the surface. After the steel abrasive hits the surface, the shot blaster recycles the media. Dust and contaminants are removed by an air wash separator and are removed to a dedicated dust extractor. This makes the process dust free in operation.

Blasting with steel shot is an environmentally friendly abrasive blasting method, because there is no use of chemical products and no waste of valuable drinking water.



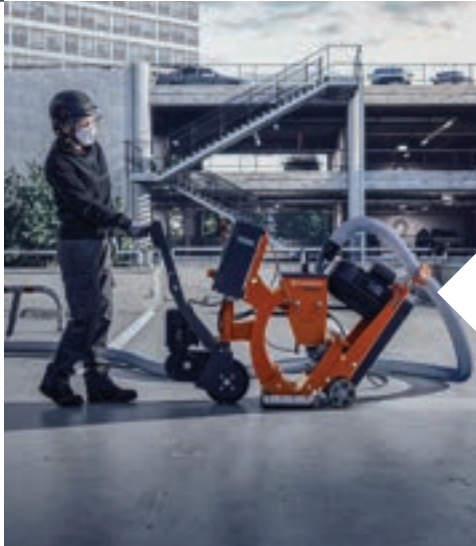
VERSATILE USE WITH DIFFERENT ABRASIVES

Depending on the type of surface you want to blast and the result you want to achieve, you can choose different types of abrasive sizes.



WORK DUST FREE

Every shot blaster has to be connected to a dust collector. This means that you are able to work dust free, creating a safer working environment.



USER FRIENDLY

Husqvarna shot blasters create minimum vibrations and are easy to move around and can turn at a 360° angle. They do not use any chemicals or waste valuable water.

TECH DATA TABLE

Full product details and technical specifications



Product Web Page



Product Specification Part Number	1-8DM 970691601	1-8DM 970691602	1-8DPS30 970691801	1-10DPS75 970690801	1-10DS 970691101	1-15DS 970691301
Engine						
Output power	2 hp (1.5 kW)	3 hp (2.2 kW)	4 hp (3 kW)	10.6 hp (8 kW)	15.8 hp (11.8 kW)	21 hp (15.6 kW)
Power source	Corded	Corded	Corded	Corded	Corded	Corded
Motor						
Phases	1 ph	1 ph	1 ph	3 ph	3 ph	3 ph
Voltage	120 V	240 V	240 V	240 V	240 - 480 V	240 - 480 V
Rated current	15 A	10 A	14 A	28 A	19 or 38 A	26 or 52 A
Frequency	60 Hz	60 Hz	60 Hz	60 Hz	60 Hz	60 Hz
Blasting						
Working width	8 in (203 mm)	8 in (203 mm)	8 in (203 mm)	10 in (254 mm)	10 in (254 mm)	15 in (381 mm)
Square feet (meter)/hour	350 ft (106 m)/hr	350 ft (106 m)/hr	600 ft (183 m)/hr	1,200 ft (366 m)/hr	2,000 ft (610 m)/hr	2,700 ft (213 m)/hr
Other						
Type of operation	Manual push	Manual push	Self-propelled	Self-propelled	Self-propelled	Self-propelled
Dimensions						
Hose diameter	2 in (51 mm)	2 in (51 mm)	3 in (76 mm)	3 in (76 mm)	5 in (127 mm)	6 in (127 mm)
Length	41 in (1,041 mm)	41 in (1,041 mm)	62 in (1,575 mm)	63 in (1,600 mm)	75 in (1,905 mm)	76 in (1,930 mm)
Width	21 in (533 mm)	21 in (533 mm)	15 in (381 mm)	16 in (406 mm)	17 in (432 mm)	22 in (559 mm)
Height	41 in (1,041 mm)	41 in (1,041 mm)	41 in (1,041 mm)	40 in (1,016 mm)	41 in (1,041 mm)	44 in (1,118 mm)
Weight	267 lbs (121 kg)	267 lbs (121 kg)	320 lbs (145 kg)	510 lbs (231 kg)	717 lbs (325 kg)	1,050 lbs (476 kg)
Sound & Noise						
Sound level	-	-	76 dB(A)	76 dB(A)	88 dB(A)	85 dB(A)
Vibrations						
Vibration handlebar	2.5 m/s ²	2.5 m/s ²	2.5 m/s ²	2.5 m/s ²	2.5 m/s ²	2.5 m/s ²
Required Dust Extractor						
Dust extractor	DE 120 H	DE 120 H	DE 120 H	DE 130 H	DC 655	DC 655

TECH DATA TABLE

Full product details and technical specifications



Product Web Page



Product Specification	2-20DT 970690901	2-30DS 970692201	2-48DS 970692502	BMR 25P 970693401	BMR 75D 970693501
Engine					
Output power	28.3 hp (21.1 kW)	41.7 hp (31 kW)	78 hp (58 kW)	25 hp (18.6 kW)	75 hp (56 kW)
Power source	Corded	Corded	Corded	Propane	Diesel
Motor					
Phases	3 ph	3 ph	3 ph	-	-
Voltage	480 V	480 V	460 V	-	-
Rated current	45 A	62 A	125 A	-	-
Frequency	60 Hz	60 Hz	60 Hz	-	-
Blasting					
Working width	22 in (559 mm)	31 in (787 mm)	48 in (1,219 mm)	10 in (254 mm)	16 in (406 mm)
Square feet (meter)/hour	4,850 ft (1,478 m)/hr	6,000 ft (1,829 m)/hr	10,000 ft (3,048 m)/hr	2,500 ft (762 m)/hr	4,500 ft (1,372 m)/hr
Other					
Type of operation	Self-propelled	Self-propelled	Self-propelled	Ride-on	Ride-on
Dimensions					
Hose diameter	6 in (152 mm)	6 in (152 mm)	2 x 6 in (152 mm)	-	-
Length	77 in (1,956 mm)	73 in (1,854 mm)	95 in (2,413 mm)	110 in (2,794 mm)	120 in (3,048 mm)
Width	28 in (711 mm)	39 in (991 mm)	56 in (1,422 mm)	43 in (1,092 mm)	62 in (1,575 mm)
Height	55 in (1,397 mm)	45 in (1,143 mm)	57 in (1,448 mm)	78 in (1,981 mm)	65 in (1,651 mm)
Weight	1,334 lbs (605 kg)	1,610 lbs (730 kg)	2,976 lbs (1,350 kg)	2,600 lbs (1,179 kg)	5,200 lbs (2,359 kg)
Sound & Noise					
Sound level	83 dB(A)	90 dB(A)	90 dB(A)	-	-
Vibrations					
Vibration handlebar	2.5 m/s ²	2.5 m/s ²	2.5 m/s ²	-	-
Required Dust Extractor					
Dust extractor	DC 975	DC 975	DC 2-48	On-board	On-board

SHOT BLASTER ACCESSORIES & SPARE PARTS

Recommended accessories/spare parts that fit these models

Product Specification		1-8DM	1-8DM	1-8DPS30	1-10DPS75	1-10DS	1-15DS
Abrasive Steel Shot							
S230	534063601	X	X	X	X	X	X
S280	534061101	X	X	X	X	X	X
S330	534061001	X	X	X	X	X	X
S390	534065701				X	X	X
S460	534063501				X	X	X
Blast Pattern Reducer							
4" (102 mm)	534050601	X					
5" (127 mm)	534052201	X					
5" (127 mm)	533385001		X				
5" (127 mm)	533765601			X			
6" (152 mm)	534050701	X					
Magnetic Brooms							
Handheld magnet	535609401	X	X	X	X	X	X
Magnetic broom	535609601	X	X	X	X	X	X
Wheel Kits							
Wheel kit	533805101	X					
Wheel kit	533805601		X	X			
Wheel kit	531459001				X	X	X

Product Specification		2-20DT	2-30DS	2-48DS	BMR 25P	BMR 75D
Abrasive Steel Shot						
S230	534063601	X	X	X		
S280	534061101	X	X	X		
S330	534061001	X	X	X	X	
S390	534065701	X	X	X	X	X
S460	534063501	X	X	X	X	X
Magnetic Brooms						
Handheld magnet	535609401	X	X	X	X	X
Magnetic broom	535609601	X	X	X	X	X
Wheel Kits						
Blade kit	531455901				X	
Blade kit	533136001					X
Pinch bar	533589901				X	
Pinch bar	533194801					X
Wheel kit	531459001	X	X			





IDEAL FOR STEEL SURFACE PREPARATION

STEEL BLASTING OVERVIEW

Husqvarna steel blasters are mainly used to prepare steel surfaces but also to remove coatings, rust and paint from these surfaces. After the steel blasting process, the surface is immediately ready for the application of a new coating.

STEEL BLASTING APPLICATIONS



STEEL SURFACE PREPARATION



SHIPYARD AND SHIP REPAIR INDUSTRIES



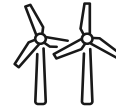
OFFSHORE OIL AND GAS INDUSTRIES



STEEL PLATE INDUSTRIES



PETROCHEMICAL INDUSTRY



STEEL PIPE INDUSTRY



STEEL BRIDGES AND DECKS

STEEL BLASTING RANGE

STEEL BLASTERS
EBE 350



Output power
15 hp (11.2 kW)
Working width
14 in (350 mm)

STEEL BLASTERS
EBE 500



Output power
35 hp (26 kW)
Working width
20 in (508 mm)



PREPARE/MAINTAIN HORIZONTAL AND VERTICAL STEEL SURFACES

Steel blasting systems are very effective methods of removing paint, coatings, non-skid and other contaminants from steel surfaces.

Steel blasting systems use steel shot or a mixture of angular steel grit and steel shot, allowing the operator to achieve a wide range of anchor patterns (surface profiles) and roughness needed for almost any type of coating application. Blasting with steel shot is an environmentally friendly abrasive blasting method, because there is no use of chemical products and no waste of valuable water.



MODULAR CONSTRUCTION

EBE 350 and 500 steel blasters can be disassembled into only a few parts. This allows for the machine to be passed through a 24 in (609 mm) storage tank access hatch.



CLOSED CIRCUIT

All our steel blaster must be connected to a dust extractor. This means that you are able to work dust free.



ERGONOMIC CONTROL PANEL

A user friendly control panel with functions that are easy to reach and monitor enables smooth control and operation.

TECH DATA TABLE

Full product details and technical specifications



Product Web Page



Product Specification	Part Number	EBE 350 970692701	EBE 500 970692901
Engine			
Output power		15 hp (11.2 kW)	35 hp (26 kW)
Power source		Corded	Corded
Motor			
Phases		3 ph	3 ph
Voltage		480 V	480 V
Rated current		32 A	63 A
Frequency		60 Hz	60 Hz
Blasting			
Working width		14 in (350 mm)	20 in (508 mm)
Working speed		49 ft/min (15 m/min)	49 ft/min (15 m/min)
Other			
Type of operation		Self propelled	Self propelled
Dimensions			
Hose diameter		5 in (127 mm)	6 in (152 mm)
Length		53 in (1,346 mm)	62 in (1,575 mm)
Width		26 in (660 mm)	30 in (762 mm)
Height		43 in (1,092 mm)	65 in (1,651 mm)
Weight		948 lbs (430 kg)	1433 lbs (650 kg)
Sound & Noise			
Sound level		90 dB(A)	92 dB(A)
Vibrations			
Vibration handlebar		2.5 m/s ²	2.5 m/s ²
Required Dust Extractor			
Dust extractor		DC 655	DC 975

STEEL BLASTING ACCESSORIES & SPARE PARTS

Recommended accessories/spare parts that fit these models

Product Specification		EBE 350	EBE 500
Abrasive Steel Shot			
SG16	534067801	X	X
SG18	534065601	X	X
SG25	534063301	X	X
S390	534065701	X	X
S460	534063501	X	X
Other			
Lowering kit	533974001		X
Wheel Kits			
Control cage	533144801	X	
Control cage	533147101		X
Blades (x6)	533147201	X	
Blades (x6)	533440901		X
Blast wheel	533360802	X	
Blast wheel	533151001		X
Impellor	533132101	X	
Impellor	533264301		X
Impellor bolt	533664501	X	
Impellor bolt	533759801		X



HUSQVARNA SCARIFIERS

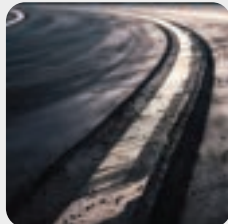
SCARIFIER OVERVIEW

Husqvarna scarifiers are versatile, dust-free surface preparation tools used for concrete, asphalt and even steel surfaces. Scarifiers use steel or carbide tipped cutters, in various shapes, depending on application, that are loaded on shafts placed around the perimeter of a cylindrical drum.

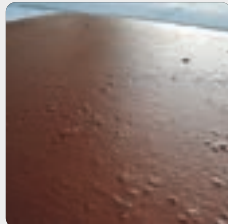
SCARIFIER APPLICATIONS



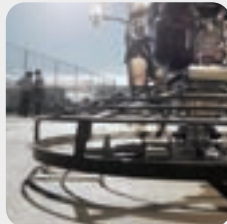
OIL/CONTAMINANTS



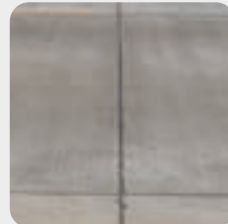
TRAFFIC LINES



EPOXY COATINGS



TROWEL MARKS



CURLED JOINTS



SAFETY GROOVES

SCARIFIER RANGE

SCARIFIER
CG 200



Output power
4.8 hp (3.6 kW)
Working width
7.8 in (200 mm)

SCARIFIER
BMC 335



Output power
21.5 hp (16 kW)
Working width
13 in (330 mm)

SCARIFIER
BMP 4000 RC



Output power
40 hp (29.8 kW)
Working width
16 in (405 mm)



LEVEL LARGE SURFACES OR REMOVE THICK COATINGS

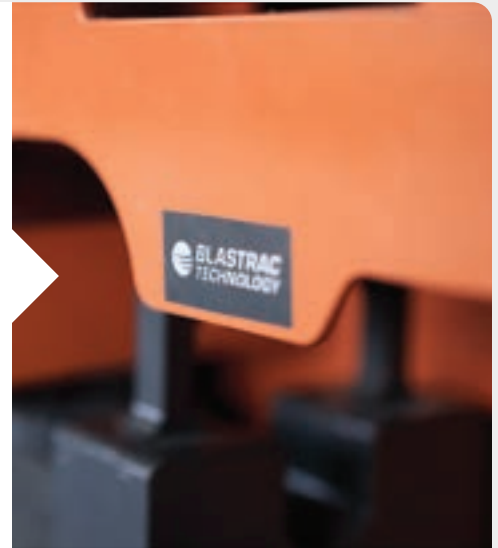
When floor scarifying, cutters are loosely fitted on lateral shafts that are then placed inside a drum housing. The drum is placed inside the scarifier and once the machine is switched on, the rotating drum generates centripetal force that 'slams' the cutter on to the surface, causing a mechanical cutting action.

All Husqvarna scarifiers are equipped with a precise height adjustment system. Dust and contaminants created by the scarifier are removed by a matching Husqvarna dust collector. This makes the scarifying process almost dust free in operation.



ELECTRIC OR GAS (PETROL)

Some of our scarifiers come in an electric or a gas (petrol) version to give you even more versatility.



LATERAL DRUM LOADING

Husqvarna scarifiers are especially designed so that the drum can be easily removed from the side without having to move the machine.



PRECISE HEIGHT ADJUSTMENT

The working depth of the drum when using cutting or milling tools is easily adjustable, and precise to the millimeter. This means no underground deterioration.

TECH DATA TABLE

Full product details and technical specifications



Product Web Page



Product Specification	CG 200 967662302	BMC 335 970615904 534249201*	BMP 400 RC 970616005
Engine			
Output power	4.8 hp (3.6 kW)	21.5 hp (16 kW)	40 hp (29.8 kW)
Power source	Gas (Petrol)	Corded	Corded
Motor			
Phases	-	-	-
Voltage	-	480 V	480 V
Rated current	-	32-63 A	63 A
Frequency	-	-	-
Scarifying			
Working width	7.8 in (200 mm)	13 in (330 mm)	16 in (405 mm)
Working speed	-	0-40 ft (0-12 m) /min	0-148 ft (0-45 m) /min
Drum rotation speed	1350 rpm	1000 rpm	300 rpm
Other			
Type of operation	Manual push	Self-propelled	Remote controlled
Dimensions			
Hose diameter	2 in (51 mm)	3 in (76 mm)	6 in (152 mm)
Length	33 in (838 mm)	54.6 in (1387 mm)	78 in (1,981 mm)
Width	20.9 in (530 mm)	26 in (660 mm)	50 in (1,270 mm)
Height	28.7 in (729 mm)	46.7 in (1,186 mm)	60 in (1,524 mm)
Weight	141 lbs (64 kg)	948 lbs (430 kg)	3417 lbs (1,550 kg)
Sound & Noise			
Sound level	101.3 dB(A)	90 dB(A)	98 dB(A)
Vibrations			
Vibration handlebar	-	2.5 m/s ²	2.5 m/s ²
Recommended Dust Extractor			
Dust Extractor	DE 120 H DE 120 PACE	T 10000 DC 655	DC 975

*Part No. 534249201 is a retrofit kit model part number to change the BMC 335 into a scarifier

SCARIFIER ACCESSORIES & SPARE PARTS

Recommended accessories/spare parts that fit these models

Product Specification		CG 200	BMP 335	BMP 4000 RC
Drums & Shafts				
5 shaft drum	533873601		X	
Drum 7.9" (200 mm)	543040210	X		
Flail shaft 7.9" (200 mm)	533969601	X		
Spare shaft	543040211		X	
Head Assembly Kits				
84 carbide wheels & 84 spacers	543040224	X		
160 star wheels & 164 spacers	543040221	X		
Complete drum with 8 point TCT cutter	534431501		X	
Complete drum with 6 point milling cutters	533127301		X	
Wheels & Cutters				
Carbide wheel	543040216	X		
Cutter spacer	534856501	X		
Milling pick for asphalt	533334701			X
Milling pick for concrete	533127701			X
Shaft support - bushing	534877201			X
Spacer	543040217	X		
Star wheel - processed steel	543040214	X		
TCT tungsten carbide tipped 8 point cutter	534420601		X	
Tungsten carbide milling cutter 6 point	533417701		X	

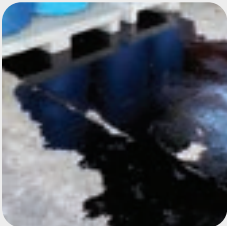


HUSQVARNA SHAVERS

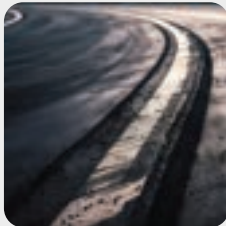
SHAYER OVERVIEW

Husqvarna offers a range of shaving machines in different sizes in order to suit any need. This improves the mobility of the Husqvarna shavers making them ideal for small to large sized job sites.

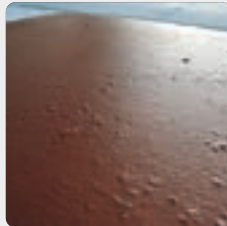
SHAYER APPLICATIONS



OIL/CONTAMINANTS



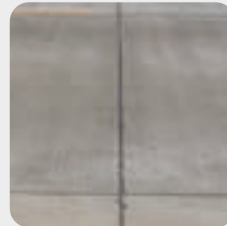
TRAFFIC LINES



EPOXY COATINGS



TROWEL MARKS



CURLED JOINTS



SAFETY GROOVES

SHAYER RANGE

SHAYER BMC 335



Output power
21.5 hp (16 kW)
Working width
13 in (330 mm)

SHAYER BMC 335 RC

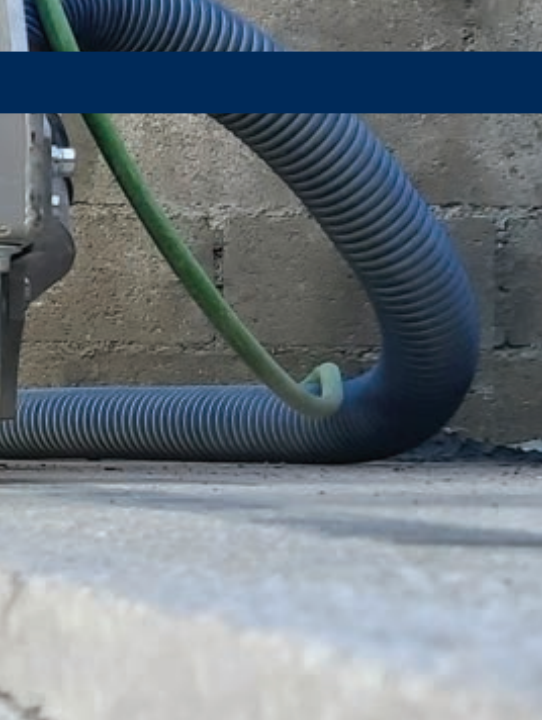


Output power
21.5 hp (16 kW)
Working width
13 in (330 mm)

SHAYER BMP 4000 RC



Output power
40 hp (29.8 kW)
Working width
16 in (405 mm)



REMOVE THICK COATINGS OR CREATE GROOVES

With a shaving machine, a drum equipped with diamond blades is placed inside a drum housing. Once the machine is switched on, the drum rotates at a very high speed to grind off the surface. Dust and contaminants created by the shaver are moved to a dedicated dust collector. This makes the process almost dust free when in operation. In addition, this technology is ideal for applications where limited vibrations are required.

Shaving is perfect to remove everything you can't remove with other technologies, without creating much vibration.



DRUM SETTINGS

Shavers use a drum fitted with diamond sawing blades. By using a certain number of sawing blades and spacers, it is possible to create a wide range of trenches from .39-13 in (1-33.5 cm) wide.



PRECISE HEIGHT ADJUSTMENT

The working depth of the shaving drum is easily adjustable, and precise to the millimeter. This means no underground deterioration. In order to create a maximum down-force on the rotating drum, our shavers are built with the weight of the machine centered.



ELECTRICAL DRIVE SYSTEM

Husqvarna shavers are equipped with an electrical drive system, which saves the operator from having permanent contact with the handle: ergonomic operations, easy adjustable speed and tracking, able to turn 360 degrees.

TECH DATA TABLE

Full product details and technical specifications



Product Web Page



Product Specification	BMC 335	BMC 335 RC	BMP 4000 RC
Part Number	970615904 534249201*	Call for details	970616005
Engine			
Output power	21.5 hp (16 kW)	21.5 hp (16 kW)	40 hp (29.8 kW)
Power source	Corded	Corded	Corded
Motor			
Phases	-	-	-
Voltage	480 V	480 V	480 V
Rated current	32-63 A	32-63 A	63 A
Frequency	-	-	-
Shaving			
Working width	13 in (330 mm)	13 in (330 mm)	16 in (405 mm)
Working speed	0-40 ft (0-12 m) /min	0-40 ft (0-12 m) /min	0-148 ft (0-45 m) /min
Drum rotation speed	1000 rpm	3000 rpm	300 rpm
Other			
Type of operation	Self-propelled	Remote controlled	Remote controlled
Dimensions			
Hose diameter	3 in (76 mm)	3 in (76 mm)	6 in (152 mm)
Length	54.6 in (13,87 mm)	54.6 in (13,87 mm)	78 in (1,981 mm)
Width	26 in (660 mm)	26 in (660 mm)	50 in (1,270 mm)
Height	46.7 in (1,186 mm)	46.7 in (1,186 mm)	60 in (1,524 mm)
Weight	948 lbs (430 kg)	948 lbs (430 kg)	3417 lbs (1,550 kg)
Sound & Noise			
Sound level	90 dB(A)	90 dB(A)	98 dB(A)
Vibrations			
Vibration handlebar	2.5 m/s ²	2.5 m/s ²	2.5 m/s ²
Recommended Dust Extractor			
Dust Extractor	T 10000 DC 655	T 10000 DC 655	DC 975

*Part No. 534249201 is a retrofit kit model part number to change the BMC 335 into a scarifier

SHAVER ACCESSORIES & SPARE PARTS

Recommended accessories/spare parts that fit these models

Product Specification		BMC 335 RC	BMP 335	BMP 4000 RC
Drums & Shafts				
5 shaft drum	533873601	X	X	
Spare shaft	543040211	X	X	
Head Assembly Kits				
Complete drum with 8 point TCT cutter	534431501	X	X	
Complete drum with 6 point milling cutters	533127301	X	X	
Naked Drum				
13" (330 mm) Shaving drum	533236201	X	X	
15" (381 mm) Shaving drum	533196601			X
Sawing Blades				
10" (254 mm) Green diamond blade	535913601	X	X	
16" (406 mm) diamond blade	533716301			X
Spacer .09" (2.5 mm)	533806001	X	X	
Wheels & Cutters				
Milling pick for asphalt	533334701			X
Milling pick for concrete	533127701			X
Shaft support - bushing	534877201			X
Spacer	543040217			
TCT tungsten carbide tipped 8 point cutter	534420601	X	X	
Tungsten carbide milling cutter 6 point	533417701	X	X	



HUSQVARNA SINGLE DISC GRINDERS

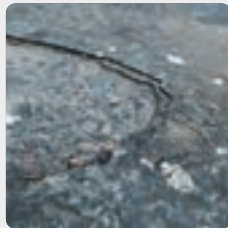
SINGLE DISC GRINDER OVERVIEW

Preparing, grinding and polishing of concrete floors as well as repairing and polishing of terrazzo and other natural stone are demanding jobs. Our mission is to enable you to perform at your maximum potential by providing you with a system that outperforms any competition.

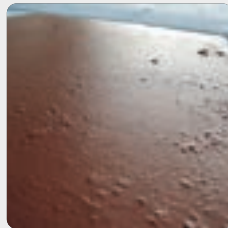
SINGLE DISC GRINDER APPLICATIONS



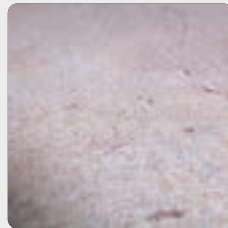
ADHESIVE REMOVAL



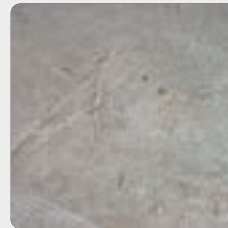
PAINT REMOVAL



EPOXY REMOVAL



SPACKLE REMOVAL



CONCRETE GRINDING



EDGE GRINDING

SINGLE DISC GRINDER RANGE SPOTLIGHT

SINGLE DISC GRINDERS
BG 250



Output power
5 hp (3.7 kW)
Working width
10 in (254 mm)

SINGLE DISC GRINDERS
BG 250 Petrol



Output power
13 hp (9.7 kW)
Working width
10 in (254 mm)

SINGLE DISC GRINDERS
PG 280



Output power
3 hp (2.2 kW)
Working width
11 in (280 mm)

SINGLE DISC GRINDERS
PG 400



Output power
5.4 hp (4 kW)
Working width
16 in (405 mm)

SINGLE DISC GRINDERS
PG 400 Petrol



Output power
10.2 hp (7.6 kW)
Working width
16 in (405 mm)

*Flip to next pages to view the full range.



LEVEL UNEVEN FLOORS & REMOVE THIN COATINGS

Husqvarna single disc floor grinders use horizontally rotating discs to perform a multitude of tasks, from light texturing to opening the pores of the surface, to the removal of paints and coatings. The single grinding head allows all the pressure of the machine to be distributed onto a few diamond tool segments making single disc grinders ideal for aggressive grinding.



EASY TO TRANSPORT & SET-UP

Husqvarna single disc grinders are designed to easily maneuver and transport. For example, some models have a detachable motor and smart lifting handles.



EDGE GRINDING

With both the HTC 270 EG and PG 280, you are able to grind up to the edges without any problem. The HTC 270 EG is specifically developed for edge grinding and has a wide variety of settings to match any situation. The long nose enables access to hard-to-reach spots such as under stairs, radiators or any other fixed obstacle.



EFFICIENT DUST MANAGEMENT

A self-adjusting, floating cover with brush list follows the surface of the floor and creates a tight seal to prevent the dust from escaping to the working environment

TECH DATA TABLE

Full product details and technical specifications



Product Web Page



Product Specification	BG 250	BG 250 Petrol	HTC 270
Part Number	970614902	970614801	967838708
Engine			
Engine model	-	-	-
Output power	5 hp (3.7 kW)	13 hp (9.7 kW)	2.9 hp (21 kW)
Power source	Corded	Gas (Petrol)	Corded
Motor			
Phases	1 ph	-	1 ph
Voltage	230 V	-	220-240 V
Rated current	23 A	-	13 A
Frequency	60 Hz	-	50-60 Hz
Pins	-	-	1P + N + E
Grinding			
Working width	10 in (254 mm)	10 in (254 mm)	10.6 in (270 mm)
Number of grinding discs	1	1	1
Grinding pressure	121 lbs (55 kg)	121 lbs (55 kg)	80 lbs (36 kg)
Grinding disc speed max	2000 rpm	2000 rpm	1,220 rpm
Other			
Type of operation	Push	Push	Push
Dimensions			
Hose diameter	3 in (76 mm)	3 in (76 mm)	2 in (51 mm)
Length	51 in (1,295 mm)	51 in (1,295 mm)	40.2 in (1,021 mm)
Width	18 in (457 mm)	18 in (457 mm)	19.1 in (485 mm)
Height	44 in (1,118 mm)	44 in (1,118 mm)	32.4 in (823 mm)
Weight	322 lbs (146 kg)	322 lbs (146 kg)	226.6 lbs (103 kg)
Sound & Noise			
Sound level	83 dB(A)	83 dB(A)	100 dB(A)
Vibrations			
Vibration handlebar	2.5 m/s ²	2.5 m/s ²	3.6 m/s ²
Recommended Dust Extractor			
Dust Extractor	DE 130 H	DE 130 H	DE 120 H

TECH DATA TABLE

Full product details and technical specifications



Product Web Page



Product Specification	PG 280 970703306	PG 280 970703307	PG 400 967966406	PG 400 Petrol 970615002
Engine				
Engine model	-	-	-	GXV 390
Output power	3 hp (2.2 kW)	1.5 hp (1.1 kW)	3.73 hp (2.8 kW)	10.2 hp (7.6 kW)
Power source	Corded	Corded	Corded	Gas (Petrol)
Motor				
Phases	1 ph	1 ph	1 ph	-
Voltage	220-240 V	100-120 V	220-240 V	-
Rated current	13 A	15 A	18 A	-
Frequency	60 Hz	60 Hz	60 Hz	-
Pins	3 pin	2 pin	2 pin	-
Grinding				
Working width	11 in (280 mm)	11 in (280 mm)	16 in (405 mm)	16 in (405 mm)
Number of grinding discs	1	1	1	1
Grinding pressure	77 lbs (35 kg)	77 lbs (35 kg)	143 lbs (65 kg)	152 lbs (69 kg)
Grinding disc speed max	1,730 rpm	1,730 rpm	1,720 rpm	1,125 rpm
Other				
Type of operation	Push	Push	Push	Push
Dimensions				
Hose diameter	2 in (51 mm)	2 in (51 mm)	2 in (51 mm)	2 in (51 mm)
Length	52 in (1,321 mm)	52 in (1,321 mm)	57 in (1,448 mm)	35.4 in (899 mm)
Width	16.5 in (419 mm)	16.5 in (419 mm)	20 in (508 mm)	18.9 in (480 mm)
Height	39 in (991 mm)	39 in (991 mm)	40 in (1,016 mm)	28 in (711 mm)
Weight	158 lbs (72 kg)	158 lbs (72 kg)	254 lbs (115 kg)	308 lbs (140 kg)
Sound & Noise				
Sound level	74 dB(A)	74 dB(A)	85 dB(A)	88 dB(A)
Vibrations				
Vibration handlebar	3.9 m/s ²	3.9 m/s ²	6.4 m/s ²	4.5 m/s ²
Recommended Dust Extractor				
Dust Extractor	DE 120 H	DE 120 H	S 36	S 36



HUSQVARNA PLANETARY GRINDERS

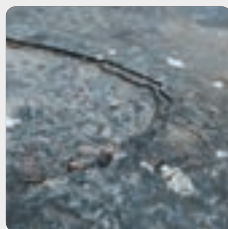
PLANETARY GRINDER OVERVIEW

Preparing, grinding and polishing of concrete floors as well as repairing and polishing of terrazzo and other natural stone are demanding jobs. Our mission is to enable you to perform at your maximum potential by providing you with a system that outperforms any competition.

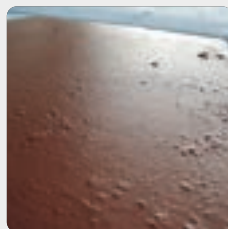
PLANETARY GRINDER APPLICATIONS



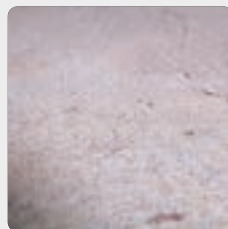
ADHESIVE REMOVAL



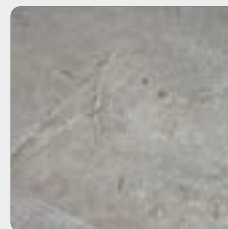
PAINT REMOVAL



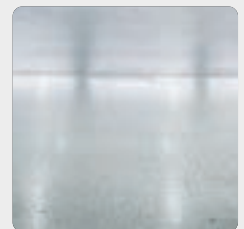
EPOXY REMOVAL



SPACKLE REMOVAL



CONCRETE GRINDING



POLISHING

PLANETARY GRINDER RANGE SPOTLIGHT*

PLANETARY GRINDERS
PG 450



Output power
3 hp (2.2 kW)
Working width
17 in (432 mm)

PLANETARY GRINDERS
PG 540



Output power
5.5 hp (4.1 kW)
Working width
20 in (508 mm)

PLANETARY GRINDERS
PG 690 P



Output power
22 hp (16.4 kW)
Working width
25 in (635 mm)

PLANETARY GRINDERS
PG 830 RC



Output power
22 hp (16.4 kW)
Working width
31.5 in (800 mm)

PLANETARY GRINDERS
HTC RX8



Output power
20 hp (14.9 kW)
Working width
31.5 in (800 mm)

*Flip to next pages to view the full range.

COATINGS, PREPARE & POLISH CONCRETE FLOORS

Preparing, grinding and polishing of concrete floors as well as repairing and polishing of terrazzo and other natural stone are demanding jobs. Our mission is to enable you to perform at your maximum potential by providing you with a wide range of large grinding machines, offering ingenious features and benefits to fit your needs.



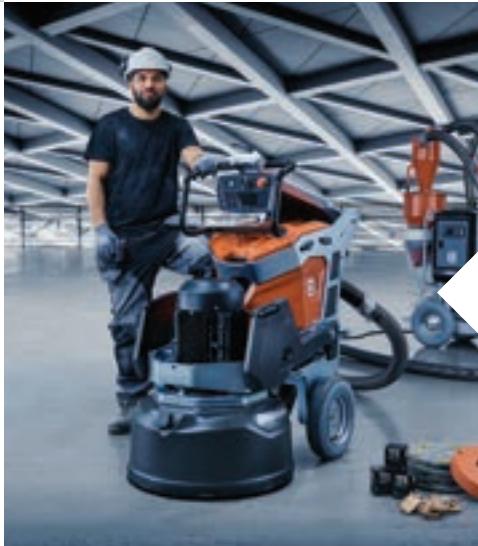
BMG SYSTEM

Husqvarna's BMG system includes high power motors, powerful belt transmission for maximum torque and a complete dust pick-up system.



PG SYSTEM

Husqvarna's PG system features dual drive technology for aggressive cuts and versatility on some models. With reliable - sealed, well proven grinding head and user-friendly machine interface.



HTC SYSTEM

The HTC system's instructive human-machine interface keeps the operator in full control. Mist spray system that cools the tools for optimal performance and a sealed, well proven grinding head.

TECH DATA TABLE

Full product details and technical specifications



Product Web Page



Product Specification	PG 450 967648605	PG 450 967648608	PG 510 967932005	PG 540 967977402	PG 540 967977404	PG 540 967977406
Engine						
Output power	3 hp (2.2 kW)	2 hp (1.5 kW)	3 hp (2.2 kW)	5.5 hp (4.1 kW)	5.5 hp (4.1 kW)	5.5 hp (4.1 kW)
Power source	Corded	Corded	Corded	Corded	Corded	Corded
Motor						
Phases	1 ph	1 ph	1 ph	3 ph	3 ph	1 ph
Voltage	220-240 V	100-120 V	220-240 V	440-480 V	200-240 V	200-240 V
Rated current	13 A	15 A	18 A	10 A	16 A	30 A
Frequency	60 Hz	60 Hz	60 Hz	50-60 Hz	50-60 Hz	50-60 Hz
Pins	3 pin	2 pin	2 pin	3P + E	3P + E	3P + E
Grinding						
Working width	17.7 (450 mm)	17.1 in (434 mm)	20 in (508 mm)	20 in (508 mm)	20 in (508 mm)	20 in (508 mm)
Number of grinding discs	3	3	3	3	3	3
Grinding pressure	130 lbs (59 kg)	130 lbs (59 kg)	176 lbs (80 kg)	165 lbs (75 kg)	165 lbs (75 kg)	165 lbs (75 kg)
Grinding disc speed max	865 rpm	575 rpm	438 rpm	1,160 rpm	1,160 rpm	1,160 rpm
Other						
Type of operation	Push	Push	Push	Push	Push	Push
Dimensions						
Hose diameter	2 in (50 mm)	2 in (50 mm)	2 in (50 mm)	2 in (50 mm)	2 in (50 mm)	2 in (50 mm)
Length	52 in (1,321 mm)	52 in (1,321 mm)	60 in (1,524 mm)	40 in (1,016 mm)	40 in (1,016 mm)	40 in (1,016 mm)
Width	19 in (483 mm)	19 in (483 mm)	22 in (559 mm)	22 in (559 mm)	22 in (559 mm)	22 in (559 mm)
Height	45 in (1,143 mm)	45 in (1,143 mm)	37 in (940 mm)	28.9 in (734 mm)	28.9 in (734 mm)	28.9 in (734 mm)
Weight	240.3 lbs (109 kg)	240.3 lbs (109 kg)	293 lbs (133 kg)	392 lbs (178 kg)	392 lbs (178 kg)	392 lbs (178 kg)
Sound & Noise						
Sound level	81 dB(A)	79 dB(A)	81 dB(A)	74 dB(A)	74 dB(A)	74 dB(A)
Vibrations						
Vibration handlebar	3.9 m/s ²	3.9 m/s ²	2.4 m/s ²	2.4 m/s ²	2.4 m/s ²	2.4 m/s ²
Recommended Dust Extractor						
Dust extractor	DE 120 H	DE 120 H	DE 130 H	DE 130 H	DE 130 H	DE 130 H

TECH DATA TABLE

Full product details and technical specifications



Product Web Page



Product Specification	HTC T5 967863618	HTC T5 967863621	HTC T5 967863616
Part Number			
Engine			
Output power	5.5 hp (4.1 kW)	5.5 hp (4.1 kW)	5.5 hp (4.1 kW)
Power source	Corded	Corded	Corded
Motor			
Phases	3 ph	3 ph	1 ph
Voltage	440-480 V	220-240 V	220-240 V
Rated current	10 A	16 A	30 A
Frequency	50-60 Hz	50-60 Hz	50-60 Hz
Pins	3P + N + E	3P + N + E	3p + E
Grinding			
Working width	20 in (508 mm)	20 in (508 mm)	20 in (508 mm)
Number of grinding discs	3	3	3
Grinding pressure	181 lbs (82 kg)	181 lbs (82 kg)	181 lbs (82 kg)
Grinding disc speed max	1,200 rpm	1,200 rpm	1,200 rpm
Other			
Type of operation	Push	Push	Push
Dimensions			
Hose diameter	2 in (50 mm)	2 in (50 mm)	2 in (50 mm)
Length	39 in (991 mm)	39 in (991 mm)	39 in (991 mm)
Width	22.2 in (564 mm)	22.2 in (564 mm)	22.2 in (564 mm)
Height	28.1 in (714 mm)	28.1 in (714 mm)	28.1 in (714 mm)
Weight	394 lbs (179 kg)	394 lbs (179 kg)	394 lbs (179 kg)
Sound & Noise			
Sound level	90 dB(A)	90 dB(A)	90 dB(A)
Vibrations			
Vibration handlebar	2.9 m/s ²	2.9 m/s ²	2.9 m/s ²
Recommended Dust Extractor			
Dust extractor	DE 130 H	DE 130 H	DE 130 H

TECH DATA TABLE

Full product details and technical specifications



Product Web Page



Product Specification	PG 690 967977502	PG 690 967977504	PG 690 RC 967977602	PG 690 RC 967977604
Engine				
Output power	17 hp (12.7 kW)	17 hp (12.7 kW)	17 hp (12.7 kW)	17 hp (12.7 kW)
Power source	Corded	Corded	Corded	Corded
Motor				
Phases	3 ph	3 ph	3 ph	3 ph
Voltage	440-480 V	200-240 V	440-480 V	200-240 V
Rated current	30 A	50 A	30 A	50 A
Frequency	50-60 Hz	50-60 Hz	50-60 Hz	50-60 Hz
Pins	3P + E	3P + E	3P + E	3P + E
Grinding				
Working width	25 in (635 mm)	25 in (635 mm)	25 in (635 mm)	25 in (635 mm)
Number of grinding discs	3	3	3	3
Grinding pressure	502 lbs (228 kg)	502 lbs (228 kg)	533 lbs (242 kg)	533 lbs (242 kg)
Grinding disc speed max	1,470 rpm	1,470 rpm	1,403 rpm	1,403 rpm
Other				
Type of operation	Push	Push	Remote controlled	Remote controlled
Dimensions				
Hose diameter	3 in (76 mm)	3 in (76 mm)	3 in (76 mm)	3 in (76 mm)
Length	51.2 in (1,300 mm)	51.2 in (1,300 mm)	52 in (1,321 mm)	52 in (1,321 mm)
Width	26.4 in (670 mm)	26.4 in (670 mm)	26.4 in (670 mm)	26.4 in (670 mm)
Height	45.3 in (1,151 mm)	45.3 in (1,151 mm)	45.5 in (1,156 mm)	45.5 in (1,156 mm)
Weight	1,107 lbs (502 kg)	1,107 lbs (502 kg)	1,318 lbs (598 kg)	1,318 lbs (598 kg)
Sound & Noise				
Sound level	78 dB(A)	78 dB(A)	78 dB(A)	78 dB(A)
Vibrations				
Vibration handlebar	2.4 /s ²	2.4 m/s ²	2.4 m/s ²	2.4 m/s ²
Recommended Dust Extractor				
Dust extractor	T 7500 T 8600	T 7500 T 8600	T 7500 T 8600	T 7500 T 8600

TECH DATA TABLE

Full product details and technical specifications



Product Web Page



Product Specification		HTC T6
Part Number		967839113
Engine		
Output power		8 hp (5.9 kW)
Power source		Corded
Motor		
Phases		1 ph
Voltage		200-240 V
Rated current		50 A
Frequency		50-60 Hz
Pins		3P + E
Grinding		
Working width		24 in (610 mm)
Number of grinding discs		3
Grinding pressure		491 lbs (223 kg)
Grinding disc speed max		1,500 rpm
Other		
Type of operation		Push
Dimensions		
Hose diameter		3 in (76 mm)
Length		54 in (1,372 mm)
Width		25.6 in (650 mm)
Height		41.1 in (1,044 mm)
Weight		845 lbs (383 kg)
Sound & Noise		
Sound level		94 dB(A)
Vibrations		
Vibration handlebar		2.4 m/s ²
Recommended Dust Extractor		
Dust extractor		D80 D60

TECH DATA TABLE

Full product details and technical specifications



Product Web Page



Product Specification	PG 830 967977802	PG 830 967977804	PG 830 RC 967977902	PG 830 RC 967977904	PG 830 S 967977702	PG 830 S 967977704
Engine						
Output power	22 hp (16.4 kW)	17 hp (12.6 kW)	22 hp (16.4 kW)	17 hp (12.6 kW)	15 hp (11.2 kW)	15 hp (11.2 kW)
Power source	Corded	Corded	Corded	Corded	Corded	Corded
Motor						
Phases	3 ph	3 ph	3 ph	3 ph	3 ph	3 ph
Voltage	440-480 V	200-240 V	440-480 V	200-240 V	440-480 V	200-240 V
Rated current	30 A	50 A	30 A	50 A	30 A	50 A
Frequency	50-60 Hz	50-60 Hz	50-60 Hz	50-60 Hz	50-60 Hz	50-60 Hz
Pins	3P + E	3P + E	3P + E	3P + E	3P + E	3P + E
Grinding						
Working width	31.5 in (800 mm)	31.5 in (800 mm)	31.5 in (800 mm)	31.5 in (800 mm)	31.5 in (800 mm)	31.5 in (800 mm)
Number of grinding discs	3	3	3	3	3	3
Grinding pressure	635 lbs (228 kg)	635 lbs (228 kg)	666 lbs (302 kg)	666 lbs (302 kg)	525 lbs (238 mm)	525 lbs (238 mm)
Grinding disc speed max	1,403 rpm	1,403 rpm	1,403 rpm	1,403 rpm	1,403 rpm	1,403 rpm
Other						
Type of operation	Push	Push	Remote controlled	Remote controlled	Push	Push
Dimensions						
Hose diameter	3 in (76 mm)	3 in (76 mm)	3 in (76 mm)	3 in (76 mm)	3 in (76 mm)	3 in (76 mm)
Length	61 in (1,549 mm)	61 in (1,549 mm)	55.5 in (1,410 mm)	55.5 in (1,410 mm)	61 in (1,549 mm)	61 in (1,549 mm)
Width	32.7 in (830 mm)	32.7 in (830 mm)	32.7 in (830 mm)	32.7 in (830 mm)	32.7 in (830 mm)	32.7 in (830 mm)
Height	45.1 in (1,145 mm)	45.1 in (1,145 mm)	45.5 in (1,156 mm)	45.5 in (1,156 mm)	45.1 in (1,145 mm)	45.1 in (1,145 mm)
Weight	1,226 lbs (556 kg)	1,226 lbs (556 kg)	1,437 lbs (652 kg)	1,437 lbs (652 kg)	1,096 lbs (497 kg)	1,096 lbs (497 kg)
Sound & Noise						
Sound level	79 dB(A)	79 dB(A)	79 dB(A)	79 dB(A)	79 dB(A)	79 dB(A)
Vibrations						
Vibration handlebar	2.4 m/s ²	2.4 m/s ²	2.4 m/s ²	2.4 m/s ²	2.4 m/s ²	2.4 m/s ²
Recommended Dust Extractor						
Dust extractor	T 18000 T 10000	T 18000 T 10000	T 18000 T 10000	T 18000 T 10000	T 18000 T 10000	T 18000 T 10000

TECH DATA TABLE

Full product details and technical specifications



Product Web Page



Product Specification	HTC RX8 967839609	HTC RX8 967839611	HTC X8 967839707	HTC T8 967839507	HTC T8 967839508
Engine					
Output power	16.1 hp (12 kW)	201 hp (15 kW)	15 hp (11.2 kW)	20.1 hp (15 kW)	16.1 hp (12 kW)
Power source	Corded	Corded	Corded	Corded	Corded
Motor					
Phases	3 ph	3 ph	3 ph	3 ph	3 ph
Voltage	220-240 V	440-480 V	440-480 V	440-480 V	220-240 V
Rated current	50 A	30 A	30 A	30 A	50 A
Frequency	50-60 Hz	50-60 Hz	50-60 Hz	50-60 Hz	50-60 Hz
Pins	3P + E	3P + E	3P + N + E	3P + N + E	3P + E
Grinding					
Working width	31.5 in (800 mm)	31.5 in (800 mm)	31.5 in (800 mm)	31.5 in (800 mm)	31.5 in (800 mm)
Number of grinding discs	4	4	4	4	4
Grinding pressure	765 lbs (347 kg)	765 lbs (347 kg)	765 lbs (347 kg)	765 lbs (347 kg)	765 lbs (347 kg)
Grinding disc speed max	1,430 rpm	1,430 rpm	1,430 rpm	1,430 rpm	1,430 rpm
Other					
Type of operation	Remote controlled	Remote controlled	Push	Push	Push
Dimensions					
Hose diameter	3 in (76 mm)	3 in (76 mm)	3 in (76 mm)	3 in (76 mm)	3 in (76 mm)
Length	59.8 in (1,519 mm)	59.8 in (1,519 mm)	59.8 in (1,519 mm)	59.8 in (1,519 mm)	59.8 in (1,519 mm)
Width	33.8 in (858 mm)	33.8 in (858 mm)	33.8 in (858 mm)	23.8 in (604 mm)	23.8 in (604 mm)
Height	41.6 in (1,057 mm)	41.6 in (1,057 mm)	41.6 in (1,057 mm)	41.6 in (1,057 mm)	41.6 in (1,057 mm)
Weight	1,217 lbs (552 kg)	1,217 lbs (552 kg)	1,177 lbs (534 kg)	1,144 lbs (519 kg)	1,098 lbs (494 kg)
Sound & Noise					
Sound level	92 dB(A)	92 dB(A)	92 dB(A)	92 dB(A)	92 dB(A)
Vibrations					
Vibration handlebar	2.4 m/s ²	2.4 m/s ²	2.4 m/s ²	2.4 m/s ²	2.4 m/s ²
Recommended Dust Extractor					
Dust extractor	D80 D60	D80 D60	D80 D60	D80 D60	D80 D60

TECH DATA TABLE

Full product details and technical specifications



Product Web Page



Product Specification	BMG 555P 970616805	PG 690P 967980201	PG 830P 970627001
Part Number			
Engine			
Engine Model	Briggs 656	Kohler PCV 680	Onyx LX 900
Output power	20 hp (14.9 kW)	22 hp (16.4 kW)	27 hp (20 kW)
Power source	Propane	Propane	Propane
Grinding			
Working width	22 in (559 mm)	25 in (635 mm)	31.5 in (800 mm)
Number of grinding discs	3	3	3
Grinding pressure	520 lbs (236 kg)	538 lbs (244 kg)	679 lbs (308 kg)
Grinding disc speed max	1,045 rpm	1,010 rpm	861 rpm
Other			
Type of operation	Push	Push	Push
Dimensions			
Hose diameter	3 in (76 mm)	3 in (76 mm)	3 in (76 mm)
Length	60 in (1,524 mm)	54 in (1,372 mm)	55.5 in (1,410 mm)
Width	24 in (610 mm)	26.4 in (670 mm)	32.7 in (830 mm)
Height	41 in (1,041 mm)	51 in (1,295 mm)	45.7 in (1,161 mm)
Weight	724 lbs (328 kg)	766 lbs (347 kg)	1,235 lbs (560 kg)
Sound & Noise			
Sound level	76 dB(A)	80.9 dB(A)	-
Vibrations			
Vibration handlebar	2.4 m/s ²	2.4 m/s ²	-
Recommended Dust Extractor			
Dust Extractor	T 4000	T 8600 P	T 8600 P

TECH DATA TABLE

Full product details and technical specifications



Product Web Page



Product Specification

Part Number

BMG 2200 RC

970616503

Engine

Output power	84 hp (62.6 kW)
Power source	Corded

Motor

Phases	3 ph
Voltage	400 V
Rated current	125 A
Frequency	-
Pins	-

Grinding

Working width	87 in (2,210 mm)
Number of grinding discs	3 x 3
Grinding pressure	882 lbs (400 kg)
Grinding disc speed max	1,200 rpm

Other

Type of operation	Ride-on
-------------------	---------

Dimensions

Hose diameter	-
Length	136 in (3,454 mm)
Width	89 in (2,261 mm)
Height	78 in (1,981 mm)
Weight	6,691 lbs (3,035 kg)

Sound & Noise

Sound level	78 dB(A)
-------------	----------

SINGLE DISC ACCESSORIES & SPARE PARTS

Recommended accessories/spare parts that fit these models

Product Specification		BG 250	BG 250 Petrol	HTC 270
Grinding discs				
10" - 20 segment premium arrow plate	533603801	X	X	
10" - 20 segment turbo blade (25/30 G)	533186301	X	X	
PCD disc	533137201	X	X	
Tool holders				
10.6" - Elastic EG 270 4	593319204			X
10.6" - Pad holder EG 270	593314704			X
Resin Holder EG 270 C	593314705			X

Product Specification		PG 280	PG 280	PG 400	PG 400 Petrol
Accessories					
Adapter, pigtail (115V, 30amp model)	581488201	X	X		
Box, surface prep tooling & accessories	501685101	X	X	X	X
Brush, back shroud	585138402	X	X		
Brush, front shroud	585138406	X	X		
Brush, side shroud (left or right)	585138403	X	X		
Resin pad holder, 11"	595023401	X	X		
Rubber damper	510213101	X	X	X	
Wrench	543045893	X	X	X	X
Tool holders					
Conversion kit (bolts to existing Redi plate)	546401701	X	X		
16" - Multi 400 9	593531003			X	X
Tool holder EZ 280 6 (Bushing)	594042001	X	X		
16" - Redi-Lock 400 18	595308701			X	X

PLANETARY ACCESSORIES & SPARE PARTS

Recommended accessories/spare parts that fit these models

Product Specification		PG 450	PG 510	PG 540
Accessories & Spare Parts				
Tool Holder - EZ Husqvarna 180 3	594041901	X		
Tool Holder - EZchange™ Click 180 HC	529617303	X		
Tool Holder - EZ Husqvarna 230 6	593494601		X	X
Tool Holder - EZchange™ Click 230 HC	529617302		X	X
Tool Holder - EZ Husqvarna 230 6 HC	547225602		X	X

Product Specification		HTC T5	HTC T6	HTC T8 Series
Accessories & Spare Parts				
Tool Holder - EZchange™ Click 230 HC	529617302	X	X	
Tool Holder - EZ Husqvarna 230 6 HC	547225602	X	X	
Tool Holder - EZchange™ Click 270 HC	529617301			X
Tool Holder - EZ Husqvarna 270 6 HC	547225601			X
Tool Holder - Velcro short-haired 230 mm	593314802	X	X	
Tool Holder - Velcro long-haired 230 mm	593314703	X	X	
Tool Holder - EZ AirFlow 230 6 C	593319302	X	X	
Tool Holder - Elastic 230 3 C	593319202	X	X	
Resin Holder - Plate Cross 230	505556301	X	X	
Tool Holder - EZ AirFlow 270 6 C	593319301			X
Tool Holder - Flexible 270 6 C	593319401			X
Pad Holder Plate Cross 270	593314701			X
Resin Holder Plate Cross 270	593314803			X
Resin Holder Plate Cross 270	505556201			X

Product Specification		PG 690 Series	PG 830 Series	PG 690 Propane	PG 830 Propane
Accessories & Spare Parts					
Tool Holder - EZ Husqvarna 270 6	593494701	X	X	X	X
Tool Holder - EZchange™ Click 270 HC	529617301	X	X	X	X
Tool Holder - EZ Husqvarna 270 6 HC	547225601	X	X	X	X
Resin Plate Holder Headlock	596901301	X	X	X	X

Product Specification		BMG 2200 RC		
Accessories & Spare Parts				
Tool Holder - EZ Diamatic 230 3	593494901			X
Resin Holder Plate DIA 230	533189001			X



HUSQVARNA DUST & SLURRY VACUUMS

DUST & SLURRY MANAGEMENT OVERVIEW

Husqvarna's range of equipment for dust and slurry management covers all needs and applications within the construction industry – from compact 1-phase dust extractors and efficient slurry vacuums to large, powerful 3-phase dust extractors for heavy-duty jobs.

DUST & SLURRY MANAGEMENT APPLICATIONS



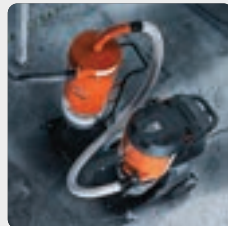
AIR SCRUBBERS



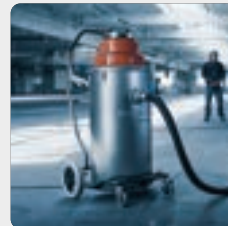
DUST COLLECTORS



DUST EXTRACTORS



PRE-SEPARATORS



SLURRY & WET VACS

DUST & SLURRY MANAGEMENT RANGE SPOTLIGHT*

AIR SCRUBBERS
A 2000



Air requirement
1200 cfm

Air flow
1200 cfm

DUST COLLECTORS
DC 655



Rated input power
8.3 hp (6.2 kW)

Air flow
1883 cfm

DUST EXTRACTORS
DE 120 H



Rated input power
3 hp (2.2 kW)

Air flow
283 cfm

PRE-SEPARATORS
C 3000



Power source
Manual

Weight
49 lbs (22 kg)

SLURRY & WET VACUUMS
W 70 P



Rated input power
2.8 hp (2 kW)

Air flow
118 cfm

*Flip to next pages to view the full range.



COMPLETE SYSTEMS FOR DUST & SLURRY MGMT

Concrete dust and slurry need to be removed in a safe and efficient way to protect you and your team from dust exposure. With Husqvarna, you get access to guidance, knowledge and a broad, fully integrated range of highly efficient equipment for dust and slurry management, enabling you to comply with rules and regulations without compromising your productivity.



LONGOPAC BAGS

The Longopac® bag system ensures simple changes of the bag without any dust spills.



HEPA FILTERS

Individually tested and certified HEPA micro filters catching 99.99% of the remaining silica dust in the respirable fraction (0.3µm).



BATTERY VACUUMS

The cordless models feature two different battery eco-systems, both of which can be used to power a constantly increasing range of Husqvarna products. Furthermore, both battery driven dust extractors give you the flexibility to use with many (battery) power tools.

TECH DATA TABLE

Full product details and technical specifications



Product Web Page



Product Specification	T 18000 967663601	T 10000 967663701	T 8600 967664201	T 8600 Propane 967664801	T 7500 967664101
Engine					
Engine model	-	-	-	-	-
Rated input power	24.1 hp (17.9 kW)	16.9 hp (12.6 kW)	11.5 hp (8.6 kW)	18 hp (13.4 kW)	10.1 hp (7.5 kW)
Power source	Corded	Corded	Corded	Propane	Corded
Motor					
Phases	3 ph	3 ph	3 ph	-	3 ph
Voltage	480 V	480 V	480 V	-	230 V
Rated current	28 A	21 A	14 A	-	24.2 A
Frequency	-	-	-	-	-
Max vacuum	4.35 psi (30 kPa)	4.35 psi (30 kPa)	4.06 psi (28 kPa)	4.21 psi (29 kPa)	4.06 psi (28 kPa)
Oil capacity	-	-	-	0.45 gal (1.7 L)	-
Fuel	-	-	-	Vapor propane	-
Max RPM	-	-	-	3,500 RPM	-
Specifications					
Air flow	710 cfm	480 cfm	353 cfm	410 cfm	353 cfm
Air requirement	710 cfm	480 cfm	353 cfm	410 cfm	353 cfm
HEPA filters 99.99% at 0.3 microns	4	3	2	3	2
Micro filter area	-	-	-	-	-
Water lift	140 in (3556 mm)	120 in (3048 mm)	100 in (2540 mm)	115 in (2921 mm)	110 in (2794 mm)
Other					
Distribution box	Yes	Yes	Yes	No	Yes
Plug size male	HBL460B7W	CS8175	CS8175	-	HBL460B7W
Plug size female	HBL460R7W	CS8169	CS8169	-	HBL460R7W
Dimensions					
Hose diameter	4 in (102 mm)	3 in (76 mm)	3 in (76 mm)	3 in (76 mm)	3 in (76 mm)
Length	55 in (1,397 mm)	55 in (1,397 mm)	49 in (1,245 mm)	55 in (1,397 mm)	49 in (1,245 mm)
Width	31 in (787 mm)	29 in (737 mm)	27 in (686 mm)	27 in (686 mm)	27 in (686 mm)
Height	71 in (1,803 mm)	68 in (1,727 mm)	69 in (1,753 mm)	69 in (1,753 mm)	69 in (1,753 mm)
Weight	900 lbs (408 kg)	740 lbs (336 kg)	454 lbs (206 kg)	628 lbs (285 kg)	454 lbs (206 kg)

TECH DATA TABLE

Full product details and technical specifications



Product Web Page



Product Specification	T 4000 Petrol	T 4000 P SC	DC 6000	HTC D80	HTC D60
Part Number	967849301	967973301	967625003	967839011	967839912
Engine					
Engine model	Honda	Honda	-	-	-
Rated input power	10 hp (7.4 kW)	10 hp (7.4 kW)	7.7 hp (5.7 kW)	10 hp (7.4 kW)	7.4 hp (5.5 kW)
Power source	Gas (Petrol)	Gas (Petrol)	Corded	Corded	Corded
Motor					
Phases	-	-	3 ph	3 ph	3 ph
Voltage	-	-	380-480 V	440-480 V	440-480 V
Rated current	-	-	15.9 A	16.7 A	15 A
Frequency	-	-	60 Hz	60 Hz	60 Hz
Max vacuum	3.77 psi (26 kPa)	3.77 psi (26 kPa)	3.05 psi (21 kPa)	5.51 psi (38 kPa)	5.43 psi (37 kPa)
Oil capacity	0.3 gal (1.14 L)	0.3 gal (1.14 L)	-	-	-
Fuel	Unleaded 86	Unleaded 86	-	-	-
Max RPM	3500 RPM	3500 RPM	-	-	-
Specifications					
Air flow	285 cfm	285 cfm	406 cfm	412 cfm	365 cfm
Air requirement	285 cfm	285 cfm	406 cfm	412 cfm	365 cfm
HEPA filters 99.99% at 0.3 microns	2	2	1	3	2
Micro filter area	-	-	-	-	-
Water lift	104 in (2,642 mm)	104 in (2,642 mm)	84 in (2,134 mm)	150 in (3,810 mm)	150 in (3,810 mm)
Other					
Distribution box	No	No	Yes	Yes	Yes
Plug size male	-	-	CS8175	-	-
Plug size female	-	-	Amphenol	-	-
Dimensions					
Hose diameter	2 in (50 mm)	2 in (50 mm)	3 in (76 mm)	3 in (76 mm)	3 in (76 mm)
Length	48.9 in (1,242 mm)	63.3 in (1,608 mm)	49 in (1,245 mm)	46.1 in (1,171 mm)	48.6 in (1,234 mm)
Width	28.2 in (716 mm)	28.9 in (734 mm)	30 in (762 mm)	31.5 in (800 mm)	26.8 in (681 mm)
Height	62.7 in (1,593 mm)	63.3 in (1,608 mm)	75 in (1,905)	68.1 in (1,730 mm)	75.6 in (1,920 mm)
Weight	453 lbs (205 kg)	523 lbs (237 kg)	670 lbs (304 kg)	600 lbs (272 kg)	395 lbs (179 kg)

TECH DATA TABLE

Full product details and technical specifications



Product Web Page



Product Specification	S 36 967663801	S 36 967663802
Engine		
Rated input power	3.2 hp (2.4 kW)	4.8 hp (3.6 kW)
Power source	Corded	Corded
Motor		
Phases	1 ph	1 ph
Voltage	120 V	230 V
Rated current	20 A	15.7 A
Frequency	-	-
Max vacuum	2.6 psi (18 kPa)	4.06 psi (28 kPa)
Specifications		
Air flow	285 cfm	354 cfm
HEPA filters 99.99% at 0.3 microns	3	3
Container capacity	-	-
Other		
Distribution box	No	Yes (30 amp out)
Pluge size male	HBL5366C	CS8269
Pluge size female	-	L6-30
Dimensions		
Hose diameter	2 in (51 mm)	2 in (51 mm)
Length	32.5 in (825 mm)	32.5 in (825 mm)
Width	24.5 in (622 mm)	24.5 in (622 mm)
Height	60 in (1,524 mm)	60 in (1,524 mm)
Weight	140 lbs (63.5 kg)	140 lbs (63.5 kg)

TECH DATA TABLE

Full product details and technical specifications



Product Web Page



Product Specification	DE 120 H 970514804	DE 120 PACE 970519601	DE 110 H 970509404	DE 110i H 970514901	DE 110 SH 970509604
Engine					
Rated input power	3 hp (2.2 kW)	3 hp (2.2 kW)	1.5 hp (1.1 kW)	1.2 hp (0.9 kW)	1.2 hp (0.9 kW)
Power source	Corded	Battery	Corded	Battery	Corded
Motor					
Phases	1 ph	-	1 ph	1 ph	1 ph
Voltage	120 V	96 V	120 V	-	120 V
Rated current	19 A	-	9.5 A	-	7.5 A
Frequency	50-60 Hz	-	50-60 Hz	-	50-60 Hz
Max vacuum	2.9 psi (20 kPa)	3.2 psi (22 kPa)	2.9 psi (20 kPa)	2.5 psi (17.2 kPa)	2.9 psi (20 kPa)
Specifications					
Air flow	283 cfm	241 cfm	141 cfm	127 cfm	127 cfm
HEPA filters 99.99% at 0.3 microns	2	2	1	1	1
Container capacity	-	-	-	-	-
Other					
Distribution box	-	-	-	-	-
Pluge size male	-	-	-	-	-
Pluge size female	-	-	-	-	-
Dimensions					
Hose diameter	2 in (50 mm)	2 in (50 mm)	1.5 in (38 mm)	1.5 in (38 mm)	1.5 in (38 mm)
Length	31.2 in (792 mm)	31.2 in (792 mm)	26.4 in (670 mm)	26.4 in (670 mm)	26.4 in (670 mm)
Width	21.3 in (541 mm)	21.3 in (541 mm)	15.7 in (399 mm)	15.7 in (399 mm)	15.7 in (399 mm)
Height	44.3 in (1,125 mm)	44.3 in (1,125 mm)	39.4 in (1,000 mm)	39.4 in (1,000 mm)	39.4 (1,000 mm)
Weight	84.9 lbs (38.5 kg)	89.9 lbs (41 kg)	56 lbs (25.4 kg)	59.1 lbs (28.8 kg)	56 lbs (25.4 kg)

TECH DATA TABLE

Full product details and technical specifications



Product Web Page



Product Specification		S 11
Part Number		970466602
Engine		
Rated input power		1.9 hp (1.4 kW)
Power source		Corded
Motor		
Phases		1 ph
Voltage		120 V
Rated current		11 A
Max vacuum		3.4 psi (23.4 kPa)
Specifications		
Air flow		157 cfm
HEPA filters 99.99% at 0.3 microns		1
Water lift		93 in (2,362 mm)
Dimensions		
Hose diameter		1.5 in (38 mm)
Length		17 in (432 mm)
Width		15 in (381 mm)
Height		21 in (533 mm)
Weight		24.3 lbs (11 kg)

TECH DATA TABLE

Full product details and technical specifications



Product Web Page



Product Specification Part Number	DC 655 Dustbin 970685205	DC 655 Longo 970685206	DC 975 Dustbin 970705201	DC 975 Longo 970705202	DC 2-48 970692401
Engine					
Rated input power	8.3 hp (6.2 kW)	8.3 hp (6.2 kW)	12 hp (8.9 kW)	12 hp (8.9 kW)	20 hp (15 kW)
Power source	Corded	Corded	Corded	Corded	Corded
Motor					
Phases	3 ph	3 ph	3 ph	3 ph	3 ph
Voltage	240-480 V	240-480 V	480 V	480 V	480 V
Rated current	37 or 67 A	37 or 67 A	62 A	62 A	32 A
Frequency	60 Hz	60 Hz	60 Hz	60 Hz	60 Hz
Max vacuum	0.7 psi (4.8 kPa)	0.7 psi (4.8 kPa)	0.96 psi (6.6 kPa)	0.96 psi (6.6 kPa)	0.96 psi (6.6 kPa)
Specifications					
Air flow	1,883 cfm	1,883 cfm	2,060 cfm	2,060 cfm	3,400 cfm
HEPA filters 99.99% at 0.3 microns	1	1	1	1	1
Container capacity	22 gal (83 L)	1 Longopac	33 gal (125 L)	1 Longopac	85 gal (322 L)
Dimensions					
Hose diameter	5-6 in (127-152 mm)	5-6 in (127-152 mm)	6 in (152 mm)	6 in (152 mm)	2 x 6 in (152 mm)
Length	68 in (1,727 mm)	68 in (1,727 mm)	68 in (1,727 mm)	68 in (1,727 mm)	91 in (2,311 mm)
Width	29.8 in (757 mm)	29.8 in (757 mm)	34 in (864 mm)	34 in (864 mm)	54 in (1,372 mm)
Height	64.7 in (1,643 mm)	64.7 in (1,643 mm)	64.7 in (1,643 mm)	64.7 in (1,643 mm)	77 in (1,956 mm)
Weight	1,060 lbs (481 kg)	1,060 lbs (481 kg)	1,149 lbs (521 kg)	1,142 lbs (518 kg)	2,094 lbs (950 kg)

TECH DATA TABLE

Full product details and technical specifications



Product Web Page



Product Specification	W 250 P 967702104	W 70 967702003	W 70 P 967664701
Engine			
Rated input power	2.1 hp (1.6 kW)	1.6 hp (1.2 kW)	2.8 hp (2.1 kW)
Power source	Corded	Corded	Corded
Motor			
Phases	1 ph	1 ph	1 ph
Voltage	120 V	120 V	120 V
Rated current	13 A	7 A	10 A
Frequency	60 Hz	-	-
Max vacuum	3.2 psi (22 kPa)	3.2 psi (22 kPa)	3.2 psi (22 kPa)
Specifications			
Air flow	95 cfm	118 cfm	118 cfm
Air requirement	95 cfm	118 cfm	118 cfm
Water lift	100 in (2,540 mm)	90 in (2,286 mm)	90 in (2,286 mm)
Dimensions			
Hose diameter	1.5 in (38 mm)	1.5 in (38 mm)	1.5 in (38 mm)
Length	20.9 in (531 mm)	23.6 in (599 mm)	23.6 in (599 mm)
Width	20.5 in (521 mm)	22.4 in (569 mm)	22.4 in (569 mm)
Height	35.8 in (909 mm)	49.2 in (1,250 mm)	49.2 in (1,250 mm)
Weight	59 lbs (26.7 kg)	75 lbs (34 kg)	97 lbs (44 kg)

TECH DATA TABLE

Full product details and technical specifications



Product Web Page



Product Specification	C 3000	C 5500	A 600	A 2000
Part Number	967664501	967664601	967664401	967672204
Engine				
Rated input power	-	-	0.5 hp (0.37 kW)	0.8 hp (0.6 kW)
Power source	Manual	Manual	Corded	Corded
Motor				
Phases	-	-	1 ph	1 ph
Voltage	-	-	120 V	120 V
Rated current	-	-	3.2 A	4.9 A
Specifications				
Air flow	-	-	600 cfm	1200 cfm
Air requirement	-	-	600 cfm	1200 cfm
Volume	10 gal (38 L)	26 gal (98 L)	-	-
Dimensions				
Hose diameter	3 in (76 mm)	3 in (76 mm)	-	-
Length	23.2 in (589 mm)	23.6 in (599 mm)	15.7 in (399 mm)	31.9 in (810 mm)
Width	28.8 in (731 mm)	28.3 in (719 mm)	17.3 in (439 mm)	27.5 in (699 mm)
Height	62.2 in (1,580 mm)	64.5 in (1,638 mm)	17.3 in (439 mm)	32.3 in (820 mm)
Weight	49 lbs (22 kg)	148 lbs (67 kg)	44 lbs (20 kg)	84 lbs (38 kg)

DUST & SLURRY MANAGEMENT ACCESSORIES & SPARE PARTS

Recommended accessories/spare parts that fit these models

Product Specification	T 18000	T 10000	T 8600	T 8600 P	T 7500
Accessories & Spare Parts					
Adapter, Y Pipe 4"-3"-3"	590429101	X			
Aluminum camlock (3"), female	590428701	X	X	X	X
Bags, Longopac, 4pk (72 ft, 6 mil)	590429201	X	X	X	X
Blade set, 18" rubber	529804202		X	X	X
C5500 Pre-separator connection kit	590433302			X	X
C5500 Pre-separator connection kit	590433301		X		
Camlock adapter (3" - 2"), female	590436501	X	X	X	X
Filter, HEPA	590429701	X	X	X	X
Filter sock assembly	590438801			X	X
Filter sock assembly	590438601		X		
Filter sock assembly	590438701	X			
Floor tool (2" x 18")	536343901		X	X	X
Hose Assembly, 3" Conductive (33' Long)	590437001	X	X	X	X
Hose assembly, 2" (25' long)	590428101		X	X	X
Hose-to-wand connection (2")	590438101		X	X	X
Plug, female 100A 230V 3ph	590436201				X
Plug, male 100A 230V 3ph	590436401				X
Plug, female 50A 480V 3ph	590436202		X	X	
Plug, male 50A 480V 3ph	590436402		X	X	
Plug, female 60A 480V 3ph	542183403	X			
Plug, male 60A 480V 3ph	542183404	X			
Silencer, drum	590429601	X			
Wand, 2-piece (2")	536344201		X	X	X

Product Specification	HTC D80	HTC D60
Accessories		
Bag Longopac 4 x 25 meters	590429201	X
Bag Longopac recycled	529681001	X
HEPA filter	593444001	X
HEPA filter	593545501	X
Hose bag, 28 L	531099202	X
Multi hose-hose connector	536134401	X
Pre-filter	593545901	X
Pre-filter	593530601	X
Vacuum hosing with end fitting - 1x cam-lock male & 1x cam-lock female	525584601	X

DUST & SLURRY MANAGEMENT ACCESSORIES & SPARE PARTS

Recommended accessories/spare parts that fit these models

Product Specification		T 4000 Petrol	T 4000 Petrol SC	DC 6000
Accessories & Spare Parts				
Adapter, 2.5" to 3" hose cuff	590429401	X	X	
Aluminum camlock (3"), female	590428701	X	X	
Bags, Longopac, 4pk (72 ft, 6 mil)	590429201	X	X	
Bags, Longopac 66 ft (25 m)	584650201			X
Camlock adapter (3" - 2"), female	590436501	X	X	
Filter, HEPA	590429801	X	X	
Filter, HEPA 13	579758801			X
Filter, Teflon coated	591947401	X	X	
Hosing, vacuum 2" with end fittings	536355501			X
Hosing, vacuum 3" with end fittings	525584601			X
Hose assembly 2" (25' Long)	536355501	X	X	
Hose assembly 2.5" (33' Long)	590437401	X	X	
Hose-to-wand connection (2")	590429301	X	X	
Pre-filter, conical	590430202	X	X	
Soff-Cut® kit, SC3000 tank kit	596236102	X	X	
Soff-Cut® kit, wide wheel kit	596236801	X	X	
Strap (Husqvarna branded)	584618701			X
Vacuum wand with floor tool	585870901			X
Wand, 2-piece (2")	536344201	X	X	

Product Specification		S 36	S 11
Accessories			
Accessory kit	598474301		X
Adapter, inlet valve	546398901	X	
Blade set, 18" rubber	529804202	X	
C 3000 Pre-separator Connection	590433303	X	
Filter bag	592001401		X
Filter, HEPA (2)	591924001		X
Filter, HEPA	590429801	X	
Filter, Teflon coated	591947401	X	
Floor tool	529805001		X
Floor tool (2" x 18")	536343901	X	
Hose assembly 2" (25' Long)	536355501	X	
Hose assembly 2.5" (33' Long)	590437401	X	
Hose-to-wand connection (2")	590429301	X	
Multi adapter 1.5 in hose	594956901		X
Pre-filter, conical	590430202	X	
Wand, 2-piece (2")	536344201	X	

DUST & SLURRY MANAGEMENT ACCESSORIES & SPARE PARTS

Recommended accessories/spare parts that fit these models

Product Specification		DE 120 Series	DE 110 Series
Adapters			
4 pc multi hose connector 1.5-2-2.5-3" (38-51-63-76 mm)	536134401	X	X
Dust cap 1.5"/2" (38/51 mm)	531363501	X	X
Hose bag 18.5 gal (70 L) for 1.5"/2" (38/51 mm) hose	531099201	X	X
Hose bag 74 gal (280 L) for 2.5"/3" (63/76 mm) hose	531099202		
Multi adapter 1.5" (38 mm)	594956901		X
Multi adapter 2" (51 mm)	594956801	X	
Swivel adapter 1.5" (38 mm)	536349501		X
Bags - Longopac			
Bag Longopac®, 4 × 82 ft (25 m)	590429201	X	X
Bag Longopac recycled	529681001	X	X
Cleaning			
Brush kit 14.6" (370 mm)	599594101		X
Brush kit 17.2" (450 mm)	599594201	X	
Floor tool 14.6" (370 mm)	529805001		X
Floor tool 17.2" (450 mm)	536343901	X	
Rubber strips 14.6" (370 mm)	529804201		X
Rubber strips 17.2" (450 mm)	529804202	X	
Wand 1.5" (38 mm)	536344101		X
Wand 2" (51 mm)	536344201	X	
Hoses			
Hose 16 ft (5 m) x 1.5" (38 mm) anti-static Includes adapters	536355401		X
Hose roll 100 ft (30 m) x 1.5" (38 mm) Excludes adapters	529569401		X
Standard hose 16 ft (5 m) x 1.5" (38 mm) Includes adapters	536355301	X	

Product Specification		DC 655 Dustbin	DC 655 Longo	DC 975 Dustbin	DC 975 Longo	DC 2-48
Accessories						
Dustbin conversion kit	533489501		X		X	
Longopac conversion kit	533941101	X				
Longopac conversion kit	534081601			X		
Consumables						
Hanging dust bag	533993301					X
Longopac	590429201		X		X	
Primary cartridge filter	533969201	X	X	X	X	X
Replacement HEPA filter	534008001	X	X	X	X	
Replacement hose 5" x 50'	533945301	X	X			
Replacement hose 6" x 50'	533976101	X	X	X	X	X

DUST & SLURRY MANAGEMENT ACCESSORIES & SPARE PARTS

Recommended accessories/spare parts that fit these models

Product Specification		W 250 P	W 70	W 70 P
Accessories				
Blade Set, 14" rubber	529804201	X	X	X
Crevice tool	536642501	X	X	X
Filter, HEPA	592061401	X	X	X
Filter, polyester	590438901	X	X	X
Floor tool	529805001	X	X	X
Hose kit	590427901	X	X	X
Hose-to-wand connection (1.5")	590437501	X	X	X
Pump	590469701		X	X
Squeegee Kit	591212002	X	X	X
Wand, 3-piece (1.5")	536344101	X	X	X

Product Specification		C 3000	C 5500	A 600	A 2000
Accessories					
Filter, HEPA	590460801			X	
Filter, HEPA	590427701				X
Hose adapter, 8"/10"	590437901			X	
Hose adapter, 12"/14"/16"	590437801				X
Hose Assembly, 3" x (33' Long)	590437001		X		
Hose kit, conductive	591970901	X	X		
Pre-filter, carbon charcoal	591994101			X	
Pre-filter, carbon charcoal	591994001				X
Pre-filter, 20 pack (12x12x1)	590430001			X	
Pre-filter, transportation cover	590480702				X
Wand, 2-piece (2")	536344201	X	X		

FLOOR TREATMENT PRODUCTS

Selection of chemicals

Product Specification Part Number	GM 3000 529750905	GM 3000 529750906	GM 3000 529750907
Accessory for	Floor Grinders	Floor Grinders	Floor Grinders
Volume	1 gal (3.8 L)	5 gal (19 L)	55 gal (208 L)
Consumption rate	300 sqft/gal (7.4 sqm/L)	300 sqft/gal (7.4 sqm/L)	300 sqft/gal (7.4 sqm/L)
Shelf life	1 year	1 year	1 year

Product Specification Part Number	CURE (K) 529751005	CURE (K) 529751006	CURE (K) 529751007
Accessory for	Floor Grinders	Floor Grinders	Floor Grinders
Volume	1 gal (3.8 L)	5 gal (19 L)	55 gal (208 L)
Consumption rate	300 sqft/gal (7.4 sqm/L)	300 sqft/gal (7.4 sqm/L)	300 sqft/gal (7.4 sqm/L)
Shelf life	1 year	1 year	1 year

Product Specification Part Number	CURE (L) 529751303	CURE (L) 529751304	CURE (L) 529751305
Accessory for	Floor Grinders	Floor Grinders	Floor Grinders
Volume	1 gal (3.8 L)	5 gal (19 L)	55 gal (208 L)
Consumption rate	300 sqft/gal (7.4 sqm/L)	300 sqft/gal (7.4 sqm/L)	300 sqft/gal (7.4 sqm/L)
Shelf life	1 year	1 year	1 year

Product Specification Part Number	PREMIUM GUARD SB 501197913	PREMIUM GUARD SB 501197914
Accessory for	Floor Grinders	Floor Grinders
Volume	1 gal (3.8 L)	5 gal (19 L)
Consumption rate	1,500 sqft/gal (37sqm/L)	1,500 sqft/gal (37sqm/L)
Shelf life	1 year	1 year

Product Specification Part Number	PREMIUM GUARD WB 501197909	PREMIUM GUARD WB 501197910	PREMIUM GUARD WB 501197911	PREMIUM GUARD WB 501197912
Accessory for	Floor Grinders	Floor Grinders	Floor Grinders	Floor Grinders
Volume	1 gal (3.8 L)	5 gal (19 L)	55 gal (208 L)	275 gal (1041 L)
Consumption rate	1,500 sqft/gal (37sqm/L)	1,500 sqft/gal (37sqm/L)	1,500 sqft/gal (37sqm/L)	1,500 sqft/gal (37sqm/L)
Shelf life	1 year	1 year	1 year	1 year

FLOOR TREATMENT PRODUCTS

Selection of chemicals

Product Specification Part Number	TOPICAL GUARD 580502908	TOPICAL GUARD 580502909
Accessory for	Floor Grinders	Floor Grinders
Volume	1 gal (3.8 L)	55 gal (208 L)
Consumption rate	1,500 sqft/gal (37sqm/L)	1,500 sqft/gal (37sqm/L)
Shelf life	1 year	1 year

Product Specification Part Number	CLEAN & PROTECT 529755204	CLEAN & PROTECT 529755205
Accessory for	Floor Grinders	Floor Grinders
Volume	1 gal (3.8 L)	5 gal (19 L)
Consumption rate (For daily cleaning mix 0.5-1 part Clean & Protect with 100 parts water)	(0.5-1dl/10L)	(0.5-1dl/10L)
Shelf life	1 year	1 year



BEFORE



SUPERFLOOR™

BRING OUT THE POWERS IN YOUR CONCRETE FLOOR

Why cover a concrete surface with materials that are not as strong as the existing concrete already in place? A Husqvarna Superfloor™ brings out the powers of your concrete floor and you will receive one of the most durable, easily maintained and versatile floors in the world.





AFTER

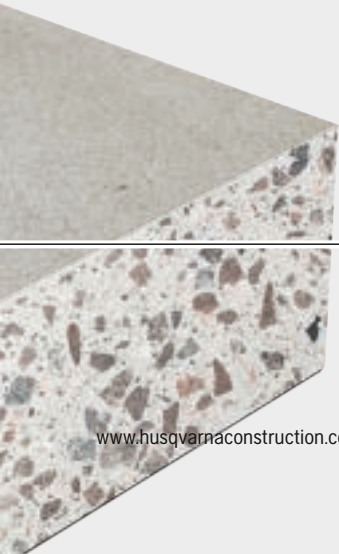


HUSQVARNA SUPERFLOOR™ – MECHANICALLY REFINED CONCRETE FLOOR

Husqvarna Superfloor™ refines the already durable concrete in place. The concrete is mechanically ground, step-by-step, achieving the desired characteristics of a Husqvarna Superfloor™.

Your Husqvarna Superfloor™ is there, just beneath the surface. You'll get your first glimpse of it once you remove existing floor coverings and start refining the surface.

When a concrete floor is cast the strongest material, the stone aggregate, settles below the surface leaving mainly cement at the upper surface. Continue grinding and polishing step-by-step brings out the full luster of exposed aggregate and strengthens the floor overall.



WHY SUPERFLOOR™?

- Highly robust, durable floor solution.
- Low life-cycle cost.
- Works just as well for new floors as when renovating existing floors.
- Extreme evenness means low vibrations on fork lifts, operators etc.
- No dust build up from the floor means a healthier environment
- The grinding process is entirely dry, without sludge or water that needs to be taken care of.
- Easy to maintain.



DIAMOND TOOLS FOR SURFACES & FLOORS

WELCOME TO A SMOOTHER WORKDAY

With this new range you can expect an unparalleled surface preparation experience. Whether you're removing a previous treatment, grinding, polishing or edging – now you can flow through every step of the job with ease. It's all part of our commitment to be your complete partner in surfaces and floors.

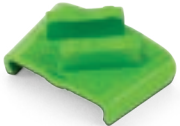
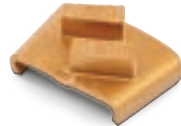





We are a global player with a heritage like no other – and the most complete offering to tackle any surface, from extremely abrasive floors to the hardest concrete, as well as special applications like natural stone and wood.



You can be sure of getting the right performance for your needs at every step of the job. Choose from three performance levels: ELITE, VARI and TACTI, represented by the colors Gold, Silver and Bronze, respectively.

SURFACE PREPARATION DIAMOND TOOLING RANGE

<p>CONCRETE GRINDING ELITE-GRIND EZ T-REX 0</p>  <hr/> <p>Application Thin coatings</p> <p>Grit PCD</p>	<p>CONCRETE GRINDING ELITE-GRIND EZ S</p>  <hr/> <p>Application Soft Concrete</p> <p>Grit #25</p>	<p>SPECIAL APPLICATIONS ELITE-GRIND 10 SEG</p>  <hr/> <p>Application Medium Concrete</p> <p>Grit #30-#100</p>	<p>CONCRETE POLISHING VARI-POLISH VF D</p>  <hr/> <p>Application Polishing pad</p> <p>Grit #30-#3000</p>	<p>CONCRETE POLISHING TACTI-POLISH TT W</p>  <hr/> <p>Application Transitional puck</p> <p>Grit #50-#200</p>
---	---	---	--	--

ELITE-GRIND DIAMOND TOOLING

Diamond tools to fit your surface preparation application

Elite-Grind EZ T-Rex Super - Metal Tools/Dry

Applications: Removing thick coatings

Description

Elite-Grind EZ T-Rex Super - 3" (85 mm) 7/8	529859305
Elite-Grind EZ T-Rex Super - 5" (125 mm) 7/8	529859325
Elite-Grind EZ T-Rex Super - 7" (180 mm) 7/8	529859380

Elite-Grind EZ T-Rex Dome L & R - Metal Tools/Dry

Applications: Removing thick coatings

Description

Elite-Grind EZ T-Rex Dome L - 3PCS	598885901
Elite-Grind EZ T-Rex Dome R - 3PCS	598886001

Elite-Grind EZ T-Rex O - Metal Tool/Dry

Applications: Removing thin coatings

Description

Elite-Grind EZ T-Rex O DS - 3PCS	598885402
----------------------------------	-----------

Elite-Grind EZ T-Rex Super Left & Right - Metal Tools/Dry

Applications: Removing thick coatings

Description

Elite-Grind EZ T-Rex Super L - 3PCS	598886101
Elite-Grind EZ T-Rex Super L Protective Segment - 3PCS	598886201
Elite-Grind EZ T-Rex Super R - 3PCS	598886301
Elite-Grind EZ T-Rex Super R Protective Segment - 3PCS	598886401

Elite-Grind EZ XS - Metal Tools/Dry

Applications: Xsoft concrete

Description

Elite-Grind EZ XS25 DS - 3PCS	546329101
Elite-Grind EZ XS30 DS - 3PCS	546329102
Elite-Grind EZ XS25 TS - 3PCS	546329103
Elite-Grind EZ XS30 TS - 3PCS	546329104

Elite-Grind EZ S - Metal Tools/Dry

Applications: Soft concrete

Description

Elite-Grind EZ S16 DS - 3PCS	598885602
Elite-Grind EZ S25 DS - 3PCS	598882002
Elite-Grind EZ S30 DS - 3PCS	598882102
Elite-Grind EZ S50 DS - 3PCS	598882202
Elite-Grind EZ S100 DS - 3PCS	598882302

ELITE-GRIND DIAMOND TOOLING

Diamond tools to fit your surface preparation application

Elite-Grind EZ M - Metal Tools/Dry

Applications: Medium concrete

Description

Elite-Grind EZ M16 DS - 3PCS	598885702
Elite-Grind EZ M25 SS - 3PCS	598882401
Elite-Grind EZ M30 SS - 3PCS	598882501
Elite-Grind EZ M50 SS - 3PCS	598882601
Elite-Grind EZ M100 SS - 3PCS	598882701
Elite-Grind EZ M25 DS - 3PCS	598882402
Elite-Grind EZ M30 DS - 3PCS	598882602
Elite-Grind EZ M50 DS - 3PCS	598882502
Elite-Grind EZ M100 DS - 3PCS	598882702

Elite-Grind EZ H - Metal Tools/Dry

Applications: Hard concrete

Description

Elite-Grind EZ H16 DS - 3PCS	598885802
Elite-Grind EZ H25 SS - 3PCS	598883201
Elite-Grind EZ H30 SS - 3PCS	598883301
Elite-Grind EZ H50 SS - 3PCS	598883401
Elite-Grind EZ H100 SS - 3PCS	598883501
Elite-Grind EZ H25 DS - 3PCS	598883202
Elite-Grind EZ H30 DS - 3PCS	598883302
Elite-Grind EZ H50 DS - 3PCS	598883402
Elite-Grind EZ H100 DS - 3PCS	598883502

Elite-Grind EZ X - Metal Tools/Dry

Applications: Xhard concrete

Description

Elite-Grind EZ X25 SS - 3PCS	598884001
Elite-Grind EZ X30 SS - 3PCS	598884101
Elite-Grind EZ X50 SS - 3PCS	598884201
Elite-Grind EZ X100 SS - 3PCS	598884301
Elite-Grind EZ X25 DS - 3PCS	598884002
Elite-Grind EZ X30 DS - 3PCS	598884102
Elite-Grind EZ X50 DS - 3PCS	598884202
Elite-Grind EZ X100 DS - 3PCS	598884302

ELITE-GRIND DIAMOND TOOLING

Diamond tools to fit your surface preparation application

Elite-Grind EZ Shar XX - Metal Tools/Dry

Applications: XXhard concrete

Description

Elite-Grind EZ Shar XX25 SS - 3PCS	598884801
Elite-Grind EZ Shar XX30 SS - 3PCS	598884901
Elite-Grind EZ Shar XX50 SS - 3PCS	598885001
Elite-Grind EZ Shar XX25 DS - 3PCS	598884802
Elite-Grind EZ Shar XX30 DS - 3PCS	598884902
Elite-Grind EZ Shar XX50 DS - 3PCS	598885002

ELITE-GRIND BUSHHAMMER DIAMOND TOOLING

Diamond tools to fit your surface preparation application

Elite-Hammer EZ Ravager (Cross) - Metal Tools

Applications: Bush hammering

Description

Elite-Hammer Ravager - 7" (180 mm)	531289918 (Cross)
Elite-Hammer Ravager - 9" (230 mm)	531289930 (Cross)
Elite-Hammer Ravager - 3 rolls - 10.5" (270 mm)	531289970 (Cross)
Elite-Hammer Ravager - 6 rolls - 10.5" (270 mm)	531289971 (Cross)

Elite-Hammer EZ Ravager (Head Lock) - Metal Tools

Applications: Bush hammering

Description

Elite-Hammer Ravager - 7" (180 mm)	531292318 (Head Lock)
Elite-Hammer Ravager - 9" (230 mm)	531292423 (Head Lock)
Elite-Hammer Ravager - 3 rolls - 10.5" (270 mm)	531292570 (Head Lock)
Elite-Hammer Ravager - 6 rolls - 10.5" (270 mm)	531292571 (Head Lock)

ELITE-SHAVE DIAMOND TOOLING

Diamond tools to fit your surface preparation application

Elite-Shave - Metal Tools

Applications: Medium concrete

Description

Elite-Shave M 225	535913601
Elite-Shave M 400	533716301

ELITE-POLISH DIAMOND TOOLING

Diamond tools to fit your surface preparation application

Elite-Polish ET - Resin Tools/Dry

Applications: Transitional pucks

Description

Elite-Polish ET 30 D - 3PCS	546179801
Elite-Polish ET 50 D - 3PCS	546179802
Elite-Polish ET 100 D - 3PCS	546179803

Elite-Polish EFT - Resin Tools/Wet

Applications: Transitional pads

Description

Elite-Polish EFT 50 W	546372701 7" (180 mm)	546372704 9" (230 mm)	546372707 11" (279 mm)
Elite-Polish EFT 100 W	546372702 7" (180 mm)	546372705 9" (230 mm)	546372708 11" (279 mm)
Elite-Polish EFT 200 W	546372703 7" (180 mm)	546372706 9" (230 mm)	546372709 11" (279 mm)

Elite-Cut Polish EP - Resin Tools/Dry

Applications: Polishing pucks

Description

Elite-Polish EP 30 D - 3PCS	546157001
Elite-Polish EP 50 D - 3PCS	546157002
Elite-Polish EP 100 D - 3PCS	546157003
Elite-Polish EP 200 D - 3PCS	546157004
Elite-Polish EP 400 D - 3PCS	546157005
Elite-Polish EP 800 D - 3PCS	546157006
Elite-Polish EP 1500 D - 3PCS	546157007
Elite-Polish EP 3000 D - 3PCS	546157008

Elite-Polish EF - Resin Tools/Dry

Applications: Polishing pads

Description

Elite-Polish EF 100	529640801 7" (180 mm)	529640802 9" (230 mm)	529640803 11" (279 mm)
Elite-Polish EF 200	529640901 7" (180 mm)	529640902 9" (230 mm)	529640903 11" (279 mm)
Elite-Polish EF 400	529641001 7" (180 mm)	529641002 9" (230 mm)	529641003 11" (279 mm)
Elite-Polish EF 800	529641101 7" (180 mm)	529641102 9" (230 mm)	529641103 11" (279 mm)
Elite-Polish EF 1500	529641201 7" (180 mm)	529641202 9" (230 mm)	529641203 11" (279 mm)
Elite-Polish EF 3000	529640701 7" (180 mm)	529640702 9" (230 mm)	529640703 11" (279 mm)

ELITE-POLISH DIAMOND TOOLING

Diamond tools to fit your surface preparation application

Elite-Polish EF - Resin Tools/Wet

Applications: Polishing pads

Description

Elite-Polish EF 100	-	-	-
Elite-Polish EF 200	546372710 7" (180 mm)	546372715 9" (230 mm)	546372720 11" (279 mm)
Elite-Polish EF 400	546372711 7" (180 mm)	546372716 9" (230 mm)	546372721 11" (279 mm)
Elite-Polish EF 800	546372712 7" (180 mm)	546372717 9" (230 mm)	546372722 11" (279 mm)
Elite-Polish EF 1500	546372713 7" (180 mm)	546372718 9" (230 mm)	546372723 11" (279 mm)
Elite-Polish EF 3000	546372714 7" (180 mm)	546372719 9" (230 mm)	546372724 11" (279 mm)

Elite-Polish EB - Resin Tools/Dry

Applications: Burnishing pads

Description

Elite-Polish EB 400 D	546183901 5" (127 mm)	546183905 7" (180 mm)	546183909 9" (230 mm)	546183913 11" (279 mm)
Elite-Polish EB 800 D	546183902 5" (127 mm)	546183906 7" (180 mm)	546183910 9" (230 mm)	546183914 11" (279 mm)
Elite-Polish EB 1500 D	546183903 5" (127 mm)	546183907 7" (180 mm)	546183911 9" (230 mm)	546183915 11" (279 mm)
Elite-Polish EB 3000 D	546183904 5" (127 mm)	546183908 7" (180 mm)	546183912 9" (230 mm)	546183916 11" (279 mm)

Elite-Polish EM - Resin Tools/Dry

Applications: Maintenance pads

Description

Elite-Polish EM 400 D	546183917 16" (406)	546183921 17" (432 mm)	546183925 21" (533 mm)	546183929 24" (609 mm)	546183933 27" (686 mm)
Elite-Polish EM 800 D	546183918 16" (406)	546183922 17" (432 mm)	546183926 21" (533 mm)	546183930 24" (609 mm)	546183934 27" (686 mm)
Elite-Polish EM 1500 D	546183919 16" (406)	546183923 17" (432 mm)	546183927 21" (533 mm)	546183931 24" (609 mm)	546183935 27" (686 mm)
Elite-Polish EM 3000 D	546183920 16" (406)	546183924 17" (432 mm)	546183928 21" (533 mm)	546183932 24" (609 mm)	546183936 27" (686 mm)

ELITE-POLISH EDGING DIAMOND TOOLING

Diamond tools to fit your surface preparation application

Elite-Polish EP Edge - Dry

Applications: Polishing edge pucks

Description

Elite-Polish EP Edge 30 D - 5" (127 mm)	529860103
Elite-Polish EP Edge 50 D - 5" (127 mm)	529860104
Elite-Polish EP Edge 100 D - 5" (127 mm)	529860105
Elite-Polish EP Edge 200 D - 5" (127 mm)	529860106
Elite-Polish EP Edge 400 D - 5" (127 mm)	529860107
Elite-Polish EP Edge 800 D - 5" (127 mm)	529860108
Elite-Polish EP Edge 1500 D - 5" (127 mm)	529860109
Elite-Polish EP Edge 3000 D - 5" (127 mm)	529860110

SPECIAL APPLICATION DIAMOND TOOLING

Diamond tools to fit your surface preparation application

Elite-Grind 10 Seg - Dry

Applications: Natural stone grinding

Description

Elite-Grind EZ M30 10-Seg	547116530
Elite-Grind EZ M50 10-Seg	547116550
Elite-Grind EZ M100 10-seg	547116500

Elite-Polish E0 - Dry

Applications: Cementitious overlay pucks

Description

Elite-Polish E0 50 D - 3" (76 mm)	546690801
Elite-Polish E0 100 D - 3" (76 mm)	546690802
Elite-Polish E0 200 D - 3" (76 mm)	546690803

Elite-Polish EX - Dry

Applications: Natural stone

Description

Elite-Polish EX 30 D	546111501 7" (180 mm)	546111001 9" (230 mm)	546110301 11" (279 mm)
Elite-Polish EX 50 D	546111502 7" (180 mm)	546111002 9" (230 mm)	546110302 11" (279 mm)
Elite-Polish EX 100 D	546111503 7" (180 mm)	546111003 9" (230 mm)	546110303 11" (279 mm)
Elite-Polish EX 200 D	546111504 7" (180 mm)	546111004 9" (230 mm)	546110304 11" (279 mm)
Elite-Polish EX 400 D	546111505 7" (180 mm)	546111005 9" (230 mm)	546110305 11" (279 mm)
Elite-Polish EX 800 D	546111506 7" (180 mm)	546111006 9" (230 mm)	546110306 11" (279 mm)
Elite-Polish EX 1500 D	546111507 7" (180 mm)	546111007 9" (230 mm)	546110307 11" (279 mm)
Elite-Polish EX 3000 D	546111508 7" (180 mm)	546111008 9" (230 mm)	546110308 11" (279 mm)

VARI-GRIND DIAMOND TOOLING

Diamond tools to fit your surface preparation application

Vari-Grind EZ T-Rex Classic - Metal Tools/Dry

Applications: Removing thin and thick coatings

Description

Vari-Grind EZ T-Rex Classic L - 3PCS	598886501
Vari-Grind EZ T-Rex Classic L Protective Segment - 3PCS	598886601
Vari-Grind EZ T-Rex Classic R - 3PCS	598886701
Vari-Grind EZ T-Rex Classic R Protective Segment - 3PCS	598886801

Vari-Grind EZ T-Rex Arrow - Metal Tools/Dry

Applications: Removing thin and thick coatings

Description

Vari-Grind EZ T-Rex Arrow - 3PCS	547116701
----------------------------------	-----------

VARI-GRIND DIAMOND TOOLING

Diamond tools to fit your surface preparation application

Vari-Grind EZ S - Metal Tools/Dry

Applications: Soft concrete

Description

Vari-Grind EZ S25 DS - 3PCS	546332301
Vari-Grind EZ S50 DS - 3PCS	546332302
Vari-Grind EZ S100 DS - 3PCS	546332303

Vari-Grind EZ M - Metal Tools/Dry

Applications: Medium concrete

Description

Vari-Grind EZ M25 DS - 3PCS	546332401
Vari-Grind EZ M50 DS - 3PCS	546332402
Vari-Grind EZ M100 DS - 3PCS	546332403
Vari-Grind EZ M25 SS - 3PCS	546332411
Vari-Grind EZ M50 SS - 3PCS	546332412
Vari-Grind EZ M100 SS - 3PCS	546332413

Vari-Grind EZ H - Metal Tools/Dry

Applications: Hard concrete

Description

Vari-Grind EZ H25 DS - 3PCS	546333101
Vari-Grind EZ H50 DS - 3PCS	546333102
Vari-Grind EZ H100 DS - 3PCS	546333103
Vari-Grind EZ H25 SS - 3PCS	546333111
Vari-Grind EZ H50 SS - 3PCS	546333112
Vari-Grind EZ H100 SS - 3PCS	546333113

VARI-POLISH DIAMOND TOOLING

Diamond tools to fit your surface preparation application

Vari-Polish VT - Resin Tools/Dry & Wet

Applications: Transitional pucks

Description

Vari-Polish VT 30 - 3" (76 mm)	546832901 (Dry)	-
Vari-Polish VT 50 - 3" (76 mm)	546832902 (Dry)	542868130 (Wet)
Vari-Polish VT 100 - 3" (76 mm)	546832903 (Dry)	542868131 (Wet)
Vari-Polish VT 200 - 3" (76 mm)	546832904 (Dry)	542868132 (Wet)
Vari-Polish VT 400 - 3" (76 mm)	546832905 (Dry)	542868133 (Wet)

VARI-POLISH DIAMOND TOOLING

Diamond tools to fit your surface preparation application

Vari-Polish VP - Resin Tools/Dry & Wet

Applications: Polishing pucks

Description

Vari-Polish VP 50 - 3" (76 mm)	546681001 (Dry)	546680501 (Wet)
Vari-Polish VP 100 - 3" (76 mm)	546681002 (Dry)	546680502 (Wet)
Vari-Polish VP 200 - 3" (76 mm)	546681003 (Dry)	546680503 (Wet)
Vari-Polish VP 400 - 3" (76 mm)	546681004 (Dry)	546680504 (Wet)
Vari-Polish VP 800 - 3" (76 mm)	546681005 (Dry)	546680505 (Wet)
Vari-Polish VP 1500 - 3" (76 mm)	546681006 (Dry)	546680506 (Wet)
Vari-Polish VP 3000 - 3" (76 mm)	546681007 (Dry)	546680507 (Wet)

Vari-Polish VF - Resin Tools/Dry

Applications: Polishing pads

Description

Vari-Polish VF 30 D	546113201 7" (180 mm)	546113101 9" (230 mm)	546113001 11" (279 mm)
Vari-Polish VF 50 D	546113202 7" (180 mm)	546113102 9" (230 mm)	546113002 11" (279 mm)
Vari-Polish VF 100 D	546113203 7" (180 mm)	546113103 9" (230 mm)	546113003 11" (279 mm)
Vari-Polish VF 200 D	546113204 7" (180 mm)	546113104 9" (230 mm)	546113004 11" (279 mm)
Vari-Polish VF 400 D	546113205 7" (180 mm)	546113105 9" (230 mm)	546113005 11" (279 mm)
Vari-Polish VF 800 D	546113206 7" (180 mm)	546113106 9" (230 mm)	546113006 11" (279 mm)
Vari-Polish VF 1500 D	546113207 7" (180 mm)	546113107 9" (230 mm)	546113007 11" (279 mm)
Vari-Polish VF 3000 D	546113208 7" (180 mm)	546113108 9" (230 mm)	546113008 11" (279 mm)

VARI-POLISH EDGING DIAMOND TOOLING

Diamond tools to fit your surface preparation application

Vari-Polish VP Edge - Dry/Wet

Applications: Edge polishing

Description

Vari-Polish VP 50 - 5" (127 mm)	546690101 (Dry)	546681901 (Wet)
Vari-Polish VP 100 - 5" (127 mm)	546690102 (Dry)	546681902 (Wet)
Vari-Polish VP 200 - 5" (127 mm)	546690103 (Dry)	546681903 (Wet)
Vari-Polish VP 400 - 5" (127 mm)	546690104 (Dry)	546681904 (Wet)
Vari-Polish VP 800 - 5" (127 mm)	546690105 (Dry)	546681905 (Wet)
Vari-Polish VP 1500 - 5" (127 mm)	546690106 (Dry)	546681906 (Wet)
Vari-Polish VP 3000 - 5" (127 mm)	546690107 (Dry)	546681907 (Wet)

SPECIAL APPLICATION DIAMOND TOOLING

Diamond tools to fit your surface preparation application

Vari-Grind EZ SL

Applications: Wood grinding

Description

Vari-Grind EZ SL25 - 3PCS	598887001
Vari-Grind EZ SL30 - 3PCS	598887101
Vari-Grind EZ SL50 - 3PCS	598887201

Vari-Polish VC - Dry

Applications: Corner polishing pads

Description

Vari-Polish VC 50 D	590533901
Vari-Polish VC 100 D	590533902
Vari-Polish VC 200 D	590533903
Vari-Polish VC 400 D	590533904
Vari-Polish VC 800 D	590533905
Vari-Polish VC 1500 D	590533906
Vari-Polish VC 3000 D	590533907

Vari-Polish VS - Dry

Applications: Wood sanding pads

Description

Vari-Polish VS 30 D	593343601 7" (180 mm)	593343602 9" (230 mm)
Vari-Polish VS 50 D	593343701 7" (180 mm)	593343702 9" (230 mm)
Vari-Polish VS 100 D	593343901 7" (180 mm)	593343902 9" (230 mm)

TACTI-POLISH DIAMOND TOOLING

Diamond tools to fit your surface preparation application

Tacti-Polish TT - Resin Tools/Wet

Applications: Transitional pucks

Description

Tacti-Polish TT 50 W - 3" (76 mm)	546680301
Tacti-Polish TT 100 W - 3" (76 mm)	546680302
Tacti-Polish TT 200 W - 3" (76 mm)	546680303

Tacti-Polish TP - Resin Tools/Dry

Applications: Polishing pucks

Description

Tacti-Polish TP 50 D - 4" (102 mm)	529325701
Tacti-Polish TP 100 D - 4" (102 mm)	529325702
Tacti-Polish TP 200 D - 4" (102 mm)	529325703
Tacti-Polish TP 400 D - 4" (102 mm)	529325704
Tacti-Polish TP 800 D - 4" (102 mm)	529325705
Tacti-Polish TP 1500 D - 4" (102 mm)	529325706
Tacti-Polish TP 3000 D - 4" (102 mm)	529325707

TACTI-POLISH EDGE DIAMOND TOOLING

Diamond tools to fit your surface preparation application

Tacti-Polish TF Edge - Dry

Applications: Edge polishing

Description

Tacti-Polish TF Edge 30 D - 5" (127 mm)	546113301
Tacti-Polish TF Edge 50 D - 5" (127 mm)	546113302
Tacti-Polish TF Edge 100 D - 5" (127 mm)	546113303
Tacti-Polish TF Edge 200 D - 5" (127 mm)	546113304
Tacti-Polish TF Edge 400 D - 5" (127 mm)	546113305
Tacti-Polish TF Edge 800 D - 5" (127 mm)	546113306
Tacti-Polish TF Edge 1500 D - 5" (127 mm)	546113307
Tacti-Polish TF Edge 3000 D - 5" (127 mm)	546113308

HUSQVARNA CUP WHEELS

Diamond tools to fit your surface preparation application

Elite-Grind Cup Wheels

Applications: Discuss with a Husqvarna Representative

Description

Elite-Grind T-Rex 0 - 5" (125 mm) 7/8	546723025
Elite-Grind T-Rex 0 - 7" (180 mm) 7/8	546723125
Elite-Grind T-Rex Super - 3" (85 mm) 7/8	529859305
Elite-Grind T-Rex Super - 5" (125 mm) 7/8	529859325
Elite-Grind T-Rex Super - 7" (180 mm) 7/8	529859380
Elite-Grind Transitional - 30 GR - 5" (125 mm) 7/8	546404225
Elite-Grind Transitional - 50 GR - 5" (125 mm) 7/8	546404325
Elite-Grind Transitional - 100 GR - 5" (125 mm) 7/8	546404425
Elite-Grind Transitional - 200 GR - 5" (125 mm) 7/8	546404525
Elite-Grind Transitional - 30GR - 7" (180 mm) 7/8	546404680
Elite-Grind Transitional - 50GR - 7" (180 mm) 7/8	546404780
Elite-Grind Transitional - 100GR - 7" (180 mm) 7/8	546404880
Elite-Grind Transitional - 200GR - 7" (180 mm) 7/8	546404980

Vari-Grind Cup Wheels

Applications: Discuss with a Husqvarna Representative

Description

Vari-Grind Arrow 0 - 4" (105 mm) 5/8-11THD	546402907
Vari-Grind Arrow 0 - 4" (105 mm) 7/8	546403304
Vari-Grind Arrow 0 - 5" (125 mm) 5/8-11THD	546403004
Vari-Grind Arrow 0 - 7" (180 mm) 5/8-11THD	546403105
Vari-Grind Arrow 0 - 7" (180 mm) 7/8	546403207
Vari-Grind Double +S - 4" (105 mm) 5/8-11THD	585327108
Vari-Grind Double +S - 4" (105 mm) 7/8-5/8B	542751307
Vari-Grind Double +S - 5" (125 mm) 7/8-5/8B	542751313
Vari-Grind Double +S - 7" (180 mm) 7/8-5/8B	542751318

Vari-Grind Cup Wheels

Applications: Discuss with a Husqvarna Representative

Description

Vari-Grind Single +H - 3" (85 mm) 7/8	546333205
Vari-Grind Single +H - 4" (105 mm) 5/8-11THD	585327105
Vari-Grind Single +H - 4" (105 mm) 7/8-5/8B	542751306
Vari-Grind Single +H - 5" (125 mm) 5/8-11THD	585327106
Vari-Grind Single +H - 5" (125 mm) 7/8-5/8B	542751312
Vari-Grind Single +H - 7" (180 mm) 5/8-11THD	585327107
Vari-Grind Single +H - 7" (180 mm) 7/8-5/8B	542751317
Vari-Grind Single H - 4" (105 mm) 5/8-11THD	585327117
Vari-Grind Single H - 4" (105 mm) 5/8-11THD	585327117
Vari-Grind Single H - 7" (180 mm) 5/8-11THD	585327118
Vari-Grind Spiral H - 4.5" (115 mm) 7/8	579821130
Vari-Grind Spiral H - 5" (125 mm) 7/8	579821140
Vari-Grind Spiral H - 6" (150 mm) 3/4	579821150
Vari-Grind Spiral H - 7" (180 mm) 7/8	579821160
Vari-Grind Turbo +M - 4" (105 mm) 5/8-11THD	585327111
Vari-Grind Turbo +M - 4" (105 mm) 7/8-5/8B	542751308
Vari-Grind Turbo +M - 5" (125mm) 5/8-11THD	585327112
Vari-Grind Turbo +M - 7" (180 mm) 5/8-11THD	585327113
Vari-Grind Turbo +M - 7" (180 mm) 7/8 -5/8B	542751319
Vari-Grind Turbo M - 4" (105 mm) 5/8-11THD	585327121
Vari-Grind Turbo M - 4" (105 mm) 7/8-5/8B	542773078
Vari-Grind Turbo M - 4.5" (115 mm) 7/8	579821430
Vari-Grind Turbo M - 5" (125 mm) 7/8	579821440
Vari-Grind Turbo M - 7" (180 mm) 7/8	579821460
Vari-Grind Turbo M - 7" (180 mm) 5/8-11THD	585327122
Vari-Grind Turbo M - 7" (180 mm) 7/8-5/8B	542773081

Tacti-Grind Cup Wheels

Applications: Discuss with a Husqvarna Representative

Description

Tacti-Grind Turbo M - 4.5" (115 mm) 1-7/8B	582242230
Tacti-Grind Turbo M - 5" (125 mm) 1-7/8B	582242240
Tacti-Grind Turbo M - 7" (180 mm) 1-7/8B	582242260



HUSQVARNA HIPERTROWEL SYSTEM

HIPERTROWEL OVERVIEW

The Hipertrowel™ method is a wet polishing process in six steps (#30G – #600G), and three optional final steps (#800G – #3000G). Depending on the conditions of the floor, initial grinding and grouting with a planetary grinder might be recommended.

HIPERTROWEL PROCESS



THE COMPLETE SYSTEM FROM HUSQVARNA



Ride-on power trowels
CRT 60 X, CRT 48, CRT 36



Gyro drivers with trowel
attachments + Hiperflex TRW
diamond tools



W 70 P + squeegee kit
Water source & Autoscrubber
Slurry disposal solution
Wall protection plastic cover
The PG 280 and HTC 270 EG complements the
system for edge working



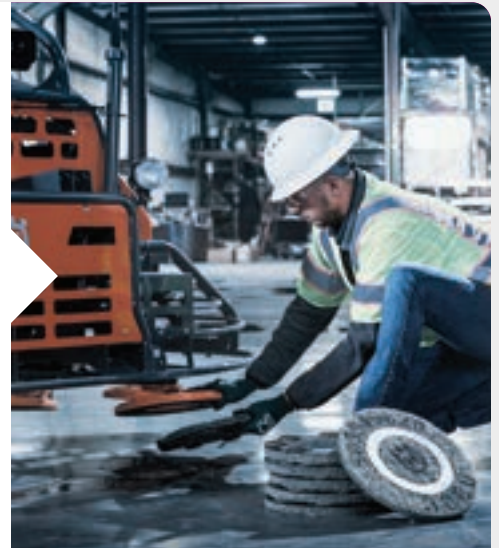
HUSQVARNA HIPERTROWEL SYSTEM

As a specialist in polishing concrete floors, you sometimes need a faster polishing method than using a planetary floor grinder. The Hipertrowel™ method is ideal for industrial floors from 500 m² and up. Both newly poured slabs and older, pre-existing floors can be processed with the Hipertrowel™ system. The Hipertrowel™ system allows you to produce a smooth, functional dust-free floor with high reflectivity at the speed of ride-on trowel finishing.



MAGNETIC MOUNT

The Hiperflex TRW tool pads are easy to mount securely underneath the Hipertrowel gyro drivers due to strong magnets connecting the pads to the driver. This is a patent pending Husqvarna system.



MAXIMUM FLEXIBILITY

Both the Hipertrowel gyro driver and Hiperflex TRW tools pads are designed for maximum flexibility in all directions. This allows the diamond tool pucks to follow the floor surface in the high & low spots and create a homogenous sale and pepper finish.



MULTI-ORBITAL ROTATION

The Hipertrowel gyro driver has a floating bearing mount that allows it to rotate independently of the trowel rotor. This solution enables a more efficient polishing process with a more consistent scratch pattern.

HIPERTROWEL CONSUMABLES

Recommended accessories/spare parts that fit these models

Product Specification		CRT 60X	CRT 48	CRT 36
Driver & Attachments				
Pad Driver 14" (350 mm) (Driver + 4 bolts)	593946821	X	X	X
Attachment A	593946822			X
Attachment B	593946823		X	
Attachment C	593946825			
Attachment D	593946842	X		
Gyro Driver Bearing	597408601	X	X	X
Diamond tools				
14 PT Metal Long-Life 30G	593946841	X	X	X
14 PT Metal Long-Life 50G	593946835	X	X	X
14 PT Metal Long-Life 100G	593946836	X	X	X
14 PT Semi Metal 30G - Purple	593946801	X	X	X
14 PT Semi Metal 50G - Green	593946813	X	X	X
14 PT Semi Metal 100G - Black	593946814	X	X	X
14 PT Semi Metal 200G - Red	593946815	X	X	X
14 PT Semi Metal 400G - Yellow	593946816	X	X	X
14 PT Resin 600G - Brown	593946817	X	X	X
14 PT Resin 800G - Grey	593946818	X	X	X
14 PT Resin 1,500G - Blue	593946819	X	X	X
14 PT Resin 3,000G - Dark Grey	593946820	X	X	X
HiperClean TRW - Silver	597279001	X	X	X
Splash guard				
Splash Guard 60	599393903	X		
Splash Guard 48	599393902		X	
Splash Guard 36	599393901			X
Wet vacuum				
W 70 P + squeegee kit	967994701 + 591212002	X	X	X

HIPERTROWEL ATTACHMENT GUIDE

Recommended accessories/spare parts that fit these models

Product Specification Part Number	ATTACHMENT A 593946822	ATTACHMENT B 593946823	ATTACHMENT C 593946825	ATTACHMENT D 593946842
Models				
Atlas Copco BG 740	X			
Atlas Copco BG 910			X	
Atlast Copco BG 920			X	
Allen Edger 900	X			
Allen Edger MP 225	X			
Allen Edger MP 235	X			
Allen Pro 900 n-o	X			
Allen MP 205	X			
Allen MP 215	X			
Allen HP 100			X	
Allen HP 200			X	
Allen MP 305			X	
Allen MP 315			X	
Allen MP Pro 1200 (non-overlap)			X	
Allen SP 400			X	
Allen SP 450			X	
Allen HD 530			X	
Allen HDX 600			X	
Allen MSP 415			X	
Allen 425			X	
Allen 450			X	
Allen 455			X	
Allen 470			X	
Allen 430			X	
Allen 435			X	
Allen 440			X	
Allen 445			X	
Allen 460			X	
Whiteman/Multiquip JTN	X			
Whiteman/Multiquip JWN	X			
Whiteman/Multiquip HTH			X	
Whiteman/Multiquip HHN			X	
Whiteman/Multiquip HTX			X	
Whiteman/Multiquip HHX			X	
Whiteman/Multiquip HTN			X	
Whiteman/Multiquip HTCD6i				X
Whiteman/Multiquip HTXG6DF				X
Whiteman/Multiquip HTX6H				X
Whiteman/Multiquip STH & STX				X



FOLLOW US ON SOCIAL



www.husqvarnaconstruction.com



P536537110